

ANIMAL HEALTH  **Pharmavet**



## Supplement Group

Antibiotic Group

### Injection Group

## Anticoccidial Group

# PRODUCT CATALOG



A PHARMACEUTICAL PRODUCT.  
PRODUCED IN TURKEY.  
FOR VETERINARY USE ONLY.  
STORE IN A DRY & COOL PLACE.



### ABOUT US

PHARMAVET It is a modern and dynamically developing company in the market of producers and suppliers of veterinary preparation in Turkey, specializing in the production of medicine preparations, feed additives, for livestock and poultry. With high culture of management based on the technology of management by objectives and high-tech manufacturing in accordance with international GMP standard.

### OUR VISION & VALUE

With the mission to develop PHARMAVET becoming a prestigious and high-quality brand in the domestic and international Veterinary industry, we develop on the basis that quality is our core value throughout all operations of the business. PHARMAVET has been constantly researching, testing and introducing high-value products together with wisest solutions for our partners to increase productivity and add value for feeders in the world.

### OUR MISSION

At Pharmavetour mission goes beyond providing quality animal health products to the industry. We believe it is critical for us to strengthen our partnerships with our customers, our distribution network and the manufacturers with whom we work. These professional partnerships will enable us to better serve our mutual customer.



ANIMAL  
HEALTH



### **WHAT WE OFFER**

We at PHARMAVET provide a wide range of services to our clients and customers. Business today thrive by focusing on what they do best and leaving the rest to others. We make use of world class technology and superior infrastructure so that quality products are manufactured, distributed and exported from our site situated at Turkey,

We mainly focus on 6 major areas for our productivity with quality and enhance our customer's delight.

### **INNOVATION**

Through significant investments in a state-of-the-art production facility, diagnostic capabilities and the exciting Pharmavet help veterinarians and producers address emerging as well as herd-specific disease challenges. A guiding principle of the Pharmavet has always been to provide Value through Innovation to our customers. We strive to provide our customers with the most innovative pharmaceuticals with the highest therapeutic value. We believe prevention is a better approach to animal health.

### **INTEGRITY**

The quality of data plays an important role in the outcome of a study. Our purpose-built data management system provides consistent and accurate data for all studies. Defining the correct regulatory strategy is critical—but can be

overwhelming. We can help you efficiently navigate the regulatory processes. We have the expertise to guide your team through unique situations. Delivering safe and effective therapeutics that elevate the standard of care in veterinary medicine.

### **QUALITY**

Our quality process and check points are managed by a team with extensive experience in animal health.

### **SUPPORT**

We support you in evaluating the safety and efficacy of your pharmaceutical product with well-planned and carefully managed veterinary clinical trials. We have the capacity and agility to service a broad range of clients, from large animal health multinationals through to emerging biotech and life sciences companies. We can take on an entire project from 'molecule to market', or provide specific services that complement your organization's in-house services

### **TIMELY DELIVERY**

Pharmavet is committed to the health of your animals so we know that time is a very critical issue, so we give high priority to commit to the time table schedule.

### **Relationship**

For us it's not only relationship it's more like partnership.

[www.pharmavet.com.tr](http://www.pharmavet.com.tr)

# FLORPHARMA™

Antibiotic Group | 1 L  
PHA: 18001

 **DOSE FORM**  
Oral Solution

 **NET CONTENTS**  
1000 mL (1 Litre)



## COMPOSITION

### Each ml contains:

Florfenicol 100 mg

Florfenicol is a synthetic broad-spectrum antibiotic that is effective against most Gram-positive and Gram-negative bacteria isolated from domestic animals. Florfenicol, a fluorinated derivative of chloramphenicol, acts by inhibiting protein synthesis at the ribosomal level.

## INDICATIONS

Florpharma is effective in preventive and therapeutic treatment of gastrointestinal and respiratory tract infections, caused by florfenicol sensitive micro-organisms such as *Actinobacillus* spp., *Pasteurella* spp., *Salmonella* spp. and *Streptococcus* spp. in poultry.

## DOSAGE

1 Litre / 1000 Litres of drinking water or as advised by a veterinarian.

## Withdrawal times

- For meat: 10 days.

MEDICINAL DRINKING WATER SHOULD BE REPLACED EVERY 24 HOURS. KEEP OUT OF THE REACH AND SIGHT OF CHILDREN. STRICTLY FOR VETERINARY USE ONLY. STORE THE PRODUCT IN THE CLOSED, ORIGINAL PACKAGING PROTECTED FROM DIRECT LIGHT, AND KEEP ITS LABEL FOR CORRECT IDENTIFICATION.

A PHARMACEUTICAL PRODUCT.  
PRODUCED IN TURKEY.  
FOR VETERINARY USE ONLY.  
STORE IN A DRY & COOL PLACE.

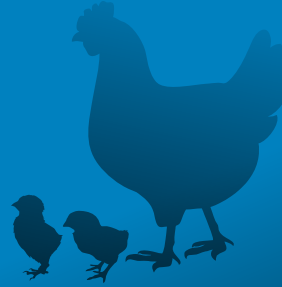


# TYLOPHARMA™

Antibiotic Group **1 L**  
PHA: 18002

 **DOSE FORM**  
Oral Solution

 **NET CONTENTS**  
1000 mL (1 Litre)



## COMPOSITION

### Each ml Contains:

Tylosin Tartrate 250 mg

Tylosin is a macrolide antibiotic with a bacteriostatic action against Gram-positive and Gram-negative bacteria. Tylosin has a bacteriostatic effect on susceptible organisms, caused by inhibition of protein synthesis through binding to the 50S subunit of the bacterial ribosome.

## INDICATIONS

Tylopharma is effective for gastrointestinal and respiratory infections caused by tylosin sensitive micro-organisms, like Campylobacter, Mycoplasma, Pasteurella, Staphylococcus, Streptococcus and Treponema spp. in animals.

## DOSAGE

1 Litre / 1000 Litres of drinking water or as advised by a veterinarian.

## Withdrawal times

- For meat: 7 days.

MEDICINAL DRINKING WATER SHOULD BE REPLACED EVERY 24 HOURS. KEEP OUT OF THE REACH AND SIGHT OF CHILDREN. STRICTLY FOR VETERINARY USE ONLY. STORE THE PRODUCT IN THE CLOSED, ORIGINAL PACKAGING PROTECTED FROM DIRECT LIGHT, AND KEEP ITS LABEL FOR CORRECT IDENTIFICATION.

A PHARMACEUTICAL PRODUCT.  
PRODUCED IN TURKEY.  
FOR VETERINARY USE ONLY.  
STORE IN A DRY & COOL PLACE.

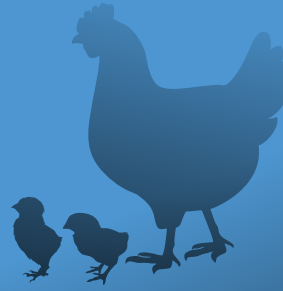


# TILMOPHARMA™

Antibiotic Group **1 L**  
PHA: 18003

 **DOSE FORM**  
Oral Solution

 **NET CONTENTS**  
1000 mL (1 Litre)



## COMPOSITION

### Each ml contains :

Tilmicosin Phosphate 250 mg

Tilmicosin is a macrolide antibiotic. It is used in veterinary medicine for the treatment of bovine respiratory disease and bovine respiratory disease associated with Mannheimia (Pasteurella) haemolytica.

## INDICATIONS

For the control and treatment of respiratory infections associated with tilmicosin-susceptible micro-organisms such as Mycoplasma spp., Pasteurella multocida, Actinobacillus pleuropneumoniae, Actinomyces pyogenes and Mannheimia haemolytica in chickens and turkeys.

## DOSAGE

250 mL / 1000 Litres of drinking water or as advised by a veterinarian.

## Withdrawal times

- For meat: 7 days.

MEDICINAL DRINKING WATER SHOULD BE REPLACED EVERY 24 HOURS. KEEP OUT OF THE REACH AND SIGHT OF CHILDREN. STRICTLY FOR VETERINARY USE ONLY. STORE THE PRODUCT IN THE CLOSED, ORIGINAL PACKAGING PROTECTED FROM DIRECT LIGHT, AND KEEP ITS LABEL FOR CORRECT IDENTIFICATION.

A PHARMACEUTICAL PRODUCT.  
PRODUCED IN TURKEY.  
FOR VETERINARY USE ONLY.  
STORE IN A DRY & COOL PLACE.





# CIPROPHARMA™

Antibiotic Group **1 L**  
PHA: 18004

 **DOSE FORM**  
Oral Solution

 **NET CONTENTS**  
1000 mL (1 Litre)



## COMPOSITION

### Each ml contains :

Ciprofloxacin 100 mg  
Ciprofloxacin belongs to the group of quinolones and acts bactericidally against mainly Gram-negative bacteria like Campylobacter, E. coli, Haemophilus, Mycoplasma, Pasteurella and Salmonella spp. Cipro-10 Pharma fastly and easily absorbed from the intestine and reach its highest concentration in blood after 1-2 hrs. It exerts its activity in destroying the bacteria by inhibiting the enzyme which is responsible for the replication of the DNA in the bacteria and also it damages the bacteria which is resistant to other antibiotics.

## INDICATIONS

Cipro-10 Pharma is effective in the treatment of digestive tract infection especially Colibacillosis and Salmonellosis and respiratory tract infection as C.C.R.D and Mycoplasma and its effective against Coryza, Cholera, Sinusitis, Air sacculitis, Omphalitis, Staph. and Strpt. infection.

## DOSAGE

1 Litre / 1000 Litres of drinking water or as advised by a veterinarian.

## Withdrawal times

- For meat: 10 days.

MEDICINAL DRINKING WATER SHOULD BE REPLACED EVERY 24 HOURS. KEEP OUT OF THE REACH AND SIGHT OF CHILDREN. STRICTLY FOR VETERINARY USE ONLY. STORE THE PRODUCT IN THE CLOSED, ORIGINAL PACKAGING PROTECTED FROM DIRECT LIGHT, AND KEEP ITS LABEL FOR CORRECT IDENTIFICATION.

A PHARMACEUTICAL PRODUCT.  
PRODUCED IN TURKEY.  
FOR VETERINARY USE ONLY.  
STORE IN A DRY & COOL PLACE.

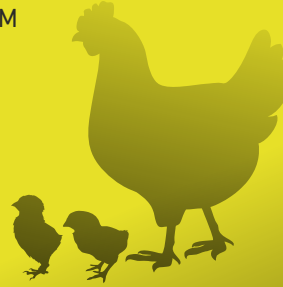


# ERTHROPHARMA™

Antibiotic Group **1 L**  
PHA: 18005

 **DOSE FORM**  
Oral Solution

 **NET CONTENTS**  
1000 mL (1 Litre)



## COMPOSITION

### Each ml contains:

Erythromycin Thiocyanate 250 mg

## INDICATIONS

Erthropharma is indicated for the treatment of Chronic Respiratory Disease (CRD) caused by Mycoplasma infections, and for the treatment of infectious (respiratory) diseases due to erythromycin-sensitive bacteria such as Staphylococcus aureus (e.g. infectious arthritis), Haemophilus paragallinarum (e.g. infectious coryza) and Pasteurella multocida (e.g. pasteurellosis; pneumonia) in poultry.

## DOSAGE

1 Litre / 1000 Litres of drinking water or as advised by a veterinarian.

## Withdrawal times

- For meat: 10 days.

MEDICINAL DRINKING WATER SHOULD BE REPLACED EVERY 24 HOURS. KEEP OUT OF THE REACH AND SIGHT OF CHILDREN. STRICTLY FOR VETERINARY USE ONLY. STORE THE PRODUCT IN THE CLOSED, ORIGINAL PACKAGING PROTECTED FROM DIRECT LIGHT, AND KEEP ITS LABEL FOR CORRECT IDENTIFICATION.

A PHARMACEUTICAL PRODUCT.  
PRODUCED IN TURKEY.  
FOR VETERINARY USE ONLY.  
STORE IN A DRY & COOL PLACE.





# FOSTOSIN™

Antibiotic Group **1 L**  
PHA: 18006

 **DOSE FORM**  
Oral Solution

 **NET CONTENTS**  
1000 mL (1 Litre)



## COMPOSITION

### Each ml contains :

Fosfomycin 100 mg  
Tylosin Tartrate 200 mg

Tylosin is a macrolide antibiotic of a bacteriostatic effect highly effective against Mycoplasma, Pasteurella, Campylobacter and Clostridium spp. Fosfomycin is effective against Gram+ve and Gram-ve bacteria like E. coli, Pasteurella, Staphylococcus, Salmonella and Pseudomonas.

## INDICATIONS

Fostosin is effective for cases of: mycoplasmosis, colibacillosis, CRD (chronic respiratory disease) in poultry, Staphylococcus infections, Listeriosis, Avian Cholera, infectious Coryza, and diseases caused by Fosfomycin and/or Tylosin susceptible organisms.

## DOSEAGE

1 Litre / 2000 Litres of drinking water or as advised by a veterinarian.

## Withdrawal times

- For meat: 7 days.

MEDICINAL DRINKING WATER SHOULD BE REPLACED EVERY 24 HOURS. KEEP OUT OF THE REACH AND SIGHT OF CHILDREN. STRICTLY FOR VETERINARY USE ONLY. STORE THE PRODUCT IN THE CLOSED, ORIGINAL PACKAGING PROTECTED FROM DIRECT LIGHT, AND KEEP ITS LABEL FOR CORRECT IDENTIFICATION.

A PHARMACEUTICAL PRODUCT.  
PRODUCED IN TURKEY.  
FOR VETERINARY USE ONLY.  
STORE IN A DRY & COOL PLACE.



# DOXPHARMA™

Antibiotic Group **1 L**  
PHA: 18007

 **DOSE FORM**  
Oral Solution

 **NET CONTENTS**  
1000 mL (1 Litre)



## COMPOSITION

### Each ml contains :

Doxycycline hyclate 200 mg  
Ciprofloxacin belongs to the group of quinolones and acts bactericidally against mainly Gram-negative bacteria like Campylobacter, E. coli, Haemophilus, Mycoplasma, Pasteurella and Salmonella spp. Cipro-10 Pharma fastly and easily absorbed from the intestine and reach its highest concentration in blood after 1-2 hrs. It exerts its activity in destroying the bacteria by inhibiting the enzyme which is responsible for the replication of the DNA in the bacteria and also it damages the bacteria which is resistant to other antibiotics.

## INDICATIONS

Doxpharma is effective for gastrointestinal and respiratory infections caused by doxycycline sensitive micro-organisms, like Bordetella, Campylobacter, Chlamydia, E. coli, Haemophilus, Mycoplasma, Pasteurella, Rickettsia, Salmonella, Staphylococcus and Streptococcus spp. in animals.

## DOSEAGE

1 Litre / 2000 Litres of drinking water or as advised by a veterinarian.

## Withdrawal times

- For meat: 7 days.

MEDICINAL DRINKING WATER SHOULD BE REPLACED EVERY 24 HOURS. KEEP OUT OF THE REACH AND SIGHT OF CHILDREN. STRICTLY FOR VETERINARY USE ONLY. STORE THE PRODUCT IN THE CLOSED, ORIGINAL PACKAGING PROTECTED FROM DIRECT LIGHT, AND KEEP ITS LABEL FOR CORRECT IDENTIFICATION.

A PHARMACEUTICAL PRODUCT.  
PRODUCED IN TURKEY.  
FOR VETERINARY USE ONLY.  
STORE IN A DRY & COOL PLACE.

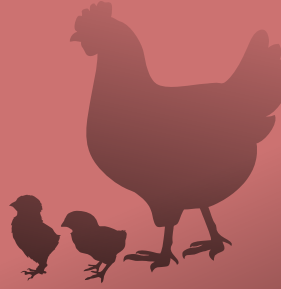


# NEOMASTİN™

Antibiotic Group | 1 L  
PHA: 18018

 **DOSE FORM**  
Oral Solution

 **NET CONTENTS**  
1000 mL (1 Litre)



## COMPOSITION

### Each 1 Litre contains :

Neomycin Sulphate 200 MG

Colistin Sulphate 1200000 I.U.

Colistin is an antibiotic from the group of polymyxins with bactericidal action against Gramnegative bacteria like E. coli. Neomycin is bactericidal aminoglycosidic antibiotic with particular activity against certain members of the Enterobacteriaceae.

## Benefits:

Neomastin is effective for gastrointestinal infections caused by colistin sensitive microorganisms like E. coli, Haemophilus and Salmonella spp. It's also reliable for prevention and treatment of bacterial enteritis.

## DOSAGE

1 Litre / 1000 Litres of drinking water or as advised by a veterinarian.

MEDICINAL DRINKING WATER SHOULD BE REPLACED EVERY 24 HOURS. KEEP OUT OF THE REACH AND SIGHT OF CHILDREN. STRICTLY FOR VETERINARY USE ONLY. STORE THE PRODUCT IN THE CLOSED, ORIGINAL PACKAGING PROTECTED FROM DIRECT LIGHT, AND KEEP ITS LABEL FOR CORRECT IDENTIFICATION.

A PHARMACEUTICAL PRODUCT.  
PRODUCED IN TURKEY.  
FOR VETERINARY USE ONLY.  
STORE IN A DRY & COOL PLACE.



# FARMACOL™

Antibiotic Group **1 L**  
PHA: 18009

 **DOSE FORM**  
Oral Solution

 **NET CONTENTS**  
1000 mL (1 Litre)



## COMPOSITION

### Each 1 mL contains:

Colistin sulphate	2400000 IU.
Excipients ad	1 ml

## INDICATIONS

FARMACOL Oral is indicated for gastrointestinal infections caused by colistin sensitive microorganisms like E. coli, Haemophilus and Salmonella spp. in calves, goats, sheep, and poultry. Colistin is an antibiotic from the group of polymyxins with bactericidal action against Gramnegative bacteria like E. coli, Haemophilus and Salmonella spp. Polymyxins interact strongly with phospholipids and penetrate into and disrupt the structure of cell membranes.

## DOSAGE CALVES, GOATS AND SHEEP

Twice daily 1 ml per 40 kg body weight for 5 - 7 days.

## POULTRY

500ml litre per 1000 litres of drinking water for 3-5 days.  
For oral administration or as advised by a veterinarian.

## Withdrawal times

- For meat: 7 days.

MEDICINAL DRINKING WATER SHOULD BE REPLACED EVERY 24 HOURS.  
KEEP OUT OF THE REACH AND SIGHT OF CHILDREN. STRICTLY FOR VETERINARY USE ONLY. STORE THE PRODUCT IN THE CLOSED, ORIGINAL PACKAGING PROTECTED FROM DIRECT LIGHT, AND KEEP ITS LABEL FOR CORRECT IDENTIFICATION.

A PHARMACEUTICAL PRODUCT.  
PRODUCED IN TURKEY.  
FOR VETERINARY USE ONLY.  
STORE IN A DRY & COOL PLACE.

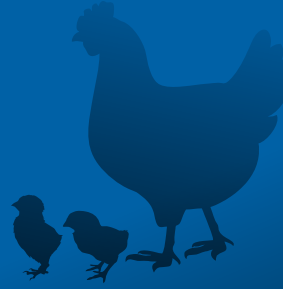


# ENROPHARMA™

Antibiotic Group **1 L**  
PHA: 18010

 **DOSE FORM**  
Oral Solution

 **NET CONTENTS**  
1000 mL (1 Litre)



## COMPOSITION

Each 1 ml contains :  
Enrofloxacin 200 mg

## INDICATIONS

Enropharma is reliable for gastrointestinal infections, respiratory infections and urinary tract infections caused by enrofloxacin sensitive micro-organisms, like Campylobacter, E. coli, Haemophilus, Mycoplasma, Pasteurella and Salmonella spp. in animals. Enrofloxacin acts by inhibiting bacterial DNA gyrase.

## DOSAGE

1 Litre / 2000 Litres of drinking water or as advised by a veterinarian.

## Withdrawal times

- For meat: 7 days.

MEDICINAL DRINKING WATER SHOULD BE REPLACED EVERY 24 HOURS. KEEP OUT OF THE REACH AND SIGHT OF CHILDREN. STRICTLY FOR VETERINARY USE ONLY. STORE THE PRODUCT IN THE CLOSED, ORIGINAL PACKAGING PROTECTED FROM DIRECT LIGHT, AND KEEP ITS LABEL FOR CORRECT IDENTIFICATION.

A PHARMACEUTICAL PRODUCT.  
PRODUCED IN TURKEY.  
FOR VETERINARY USE ONLY.  
STORE IN A DRY & COOL PLACE.

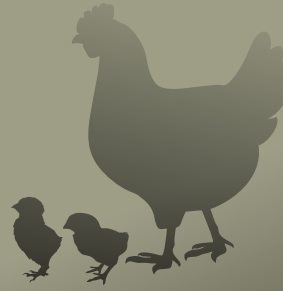


# THIAMPHARMA™

Antibiotic Group  
PHA: 18019 | 1L

 **DOSE FORM**  
Oral Solution

 **NET CONTENTS**  
1000 mL (1 Litre)



## COMPOSITION

### Each 1 Litre contains :

Thiamphenicol 100 MG

Thiamphenicol is a broad-spectrum antibiotic, active against both Gram-positive and Gram-negative bacteria and especially effective against anaerobes. Thiamphenicol inhibits protein synthesis in bacteria.

### Benefits:

Thiampharma has bacteriostatic activity against Gram-positive and Gram-negative bacteria, in particular Spirochetes, Rickettsiae, Pasteurella Treponema and Bordetella spp. It is indicated for gastrointestinal and respiratory infections in cattle and poultry caused by microorganisms susceptible to thiamphenicol.

## DOSAGE

1 Litre / 1000 Litres of drinking water or as advised by a veterinarian.

MEDICINAL DRINKING WATER SHOULD BE REPLACED EVERY 24 HOURS. KEEP OUT OF THE REACH AND SIGHT OF CHILDREN. STRICTLY FOR VETERINARY USE ONLY. STORE THE PRODUCT IN THE CLOSED, ORIGINAL PACKAGING PROTECTED FROM DIRECT LIGHT, AND KEEP ITS LABEL FOR CORRECT IDENTIFICATION.

A PHARMACEUTICAL PRODUCT.  
PRODUCED IN TURKEY.  
FOR VETERINARY USE ONLY.  
STORE IN A DRY & COOL PLACE.



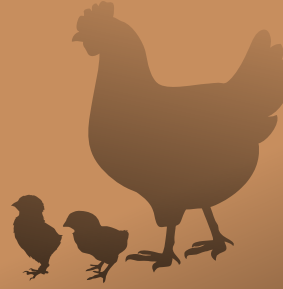


# FOSPHARMA™

Antibiotic Group **1 L**  
PHA: 18011

 **DOSE FORM**  
Oral Solution

 **NET CONTENTS**  
1000 mL (1 Litre)



## COMPOSITION

Each 1 litre contains :

Fosfomycin calcium 200 mg

## INDICATIONS

FOSPHARMA is indicated for the treatment of bacterial infections caused by Gram-positive, Gram-negative bacteria and mycoplasma in the digestive and respiratory tract in poultry also indicated for the treatment of infections caused by E. Coli, Salmonella spp., Staphylococcus spp., Streptococcus spp. and in the treatment of infectious Coryza, Chronic Respiratory Disease (CRD), Avian cholera, Listeriosis, Pseudomonosis and diseases caused by fosfomycin susceptible organisms.

## DOSAGE

250ml\1000 Ldrinking water or as advicved by veterinarian

MEDICINAL DRINKING WATER SHOULD BE REPLACED EVERY 24 HOURS. KEEP OUT OF THE REACH AND SIGHT OF CHILDREN. STRICTLY FOR VETERINARY USE ONLY. STORE THE PRODUCT IN THE CLOSED, ORIGINAL PACKAGING PROTECTED FROM DIRECT LIGHT, AND KEEP ITS LABEL FOR CORRECT IDENTIFICATION.

A PHARMACEUTICAL PRODUCT.  
PRODUCED IN TURKEY.  
FOR VETERINARY USE ONLY.  
STORE IN A DRY & COOL PLACE.



# E-T PHARMA™

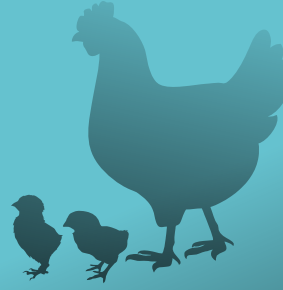
**500 GM**  
Supplement Group  
PHA: 18016



**DOSE FORM**  
Oral Solution



**NET CONTENTS**  
1000 mL (1 Litre)



## COMPOSITION

### Each 1 gm Contains:

Erythromycin Thiocyanate	200 MG
Tylosin Tartrate	200 MG

## INDICATIONS:

E-T Pharma is reliable for the treatment of Chronic Respiratory Disease (CRD) caused by Mycoplasma infections, and for the treatment of infectious respiratory diseases due to erythromycin-sensitive and/or tylosin-sensitive bacteria such as Staphylococcus aureus (e.g. infectious arthritis), Haemophilus paragallinarum (e.g. infectious coryza) and Pasteurella multocida (e.g. pasteurellosis; pneumonia) in poultry.

## DOSAGE

500 gm / 1000 Litres of drinking water or as advised by a veterinarian.

## SAFETY & STORAGE PRECAUTIONS

KEEP OUT OF THE REACH AND SIGHT OF CHILDREN. STRICTLY FOR VETERINARY USE ONLY. STORE THE PRODUCT IN THE CLOSED, ORIGINAL PACKAGING PROTECTED FROM DIRECT LIGHT, AND KEEP ITS LABEL FOR CORRECT IDENTIFICATION.

A PHARMACEUTICAL PRODUCT.  
PRODUCED IN TURKEY.  
FOR VETERINARY USE ONLY.  
STORE IN A DRY & COOL PLACE.



# D-G-C PHARMA™

**500 GM**  
Supplement Group  
PHA: 18013



**DOSE FORM**  
Oral Solution



**NET CONTENTS**  
1000 mL (1 Litre)



## COMPOSITION

### Each 1 gm Contains :

Doxycycline Hyclate	120 MG
Gentamicin Sulphate	80 MG
Colistin Sulphate	1200000 I.U.

## INDICATIONS :

D-G-C Pharma is effective for gastrointestinal and respiratory infections caused by micro-organisms sensitive to doxycycline, gentamicin and/or colistin like Bordetella, Campylobacter, Chlamydia, E. coli, Klebsiella, Haemophilus, Mycoplasma, Pasteurella, Rickettsia, Salmonella, Staphylococcus and Streptococcus spp. in animals.

## DOSEAGE

500 gm / 1000 Litres of drinking water or as advised by a veterinarian.

## SAFETY & STORAGE PRECAUTIONS

KEEP OUT OF THE REACH AND SIGHT OF CHILDREN. STRICTLY FOR VETERINARY USE ONLY. STORE THE PRODUCT IN THE CLOSED, ORIGINAL PACKAGING PROTECTED FROM DIRECT LIGHT, AND KEEP ITS LABEL FOR CORRECT IDENTIFICATION.

A PHARMACEUTICAL PRODUCT.  
PRODUCED IN TURKEY.  
FOR VETERINARY USE ONLY.  
STORE IN A DRY & COOL PLACE.



# DOXYPHARMA™

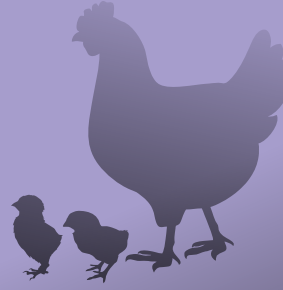
**500 GM**  
Supplement Group  
PHA 18014



**DOSE FORM**  
Oral Solution



**NET CONTENTS**  
1000 mL (1 Litre)



## COMPOSITION

### Each 1 gm Contains:

Doxycycline Hyclate 500 MG

Doxycycline belongs to the group of tetracyclines and acts bacteriostatic against many Gram-positive and Gram-negative bacteria. The action of doxycycline is based on inhibition of bacterial protein synthesis.

## INDICATIONS:

Doxypharma is effective for gastrointestinal and respiratory infections caused by doxycycline sensitive micro-organisms, like Bordetella, Campylobacter, Chlamydia, E. coli, Haemophilus, Mycoplasma, Pasteurella, Rickettsia, Salmonella, Staphylococcus and Streptococcus spp. in animals.

## DOSAGE

250 gm / 1000 Litres of drinking water or as advised by a veterinarian.

## SAFETY & STORAGE PRECAUTIONS

KEEP OUT OF THE REACH AND SIGHT OF CHILDREN. STRICTLY FOR VETERINARY USE ONLY. STORE THE PRODUCT IN THE CLOSED, ORIGINAL PACKAGING PROTECTED FROM DIRECT LIGHT, AND KEEP ITS LABEL FOR CORRECT IDENTIFICATION.

A PHARMACEUTICAL PRODUCT.  
PRODUCED IN TURKEY.  
FOR VETERINARY USE ONLY.  
STORE IN A DRY & COOL PLACE.

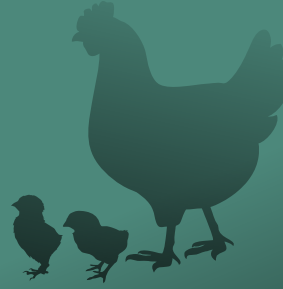


# D-T-C PHARMA™

**500 GM**  
Supplement Group  
PHA: 18015

 **DOSE FORM**  
Oral Solution

 **NET CONTENTS**  
1000 mL (1 Litre)



## COMPOSITION

### Each 1 gm Contains:

Doxycycline Hyclate	120 MG
Tylosin Tartrate	100 MG
Colistin Sulphate	1200000 I.U.

## INDICATIONS:

D-T-C Pharma is effective for gastrointestinal and respiratory infections caused by micro-organisms sensitive to doxycycline, tylosin and/or colistin like Bordetella, Campylobacter, Chlamydia, E. coli, Klebsiella, Haemophilus, Mycoplasma, Pasteurella, Rickettsia, Salmonella, Staphylococcus and Streptococcus spp. in animals.

## DOSAGE

500 gm / 1000 Litres of drinking water or as advised by a veterinarian.

## SAFETY & STORAGE PRECAUTIONS

KEEP OUT OF THE REACH AND SIGHT OF CHILDREN. STRICTLY FOR VETERINARY USE ONLY. STORE THE PRODUCT IN THE CLOSED, ORIGINAL PACKAGING PROTECTED FROM DIRECT LIGHT, AND KEEP ITS LABEL FOR CORRECT IDENTIFICATION.

A PHARMACEUTICAL PRODUCT.  
PRODUCED IN TURKEY.  
FOR VETERINARY USE ONLY.  
STORE IN A DRY & COOL PLACE.



# T-FOSPHARMA™

**500 GM**  
Supplement Group  
PHA: 18017



**DOSE FORM**  
Oral Solution



**NET CONTENTS**  
1000 mL (1 Litre)



## COMPOSITION

### Each 1 gm Contains:

Tylosin Tartrate 400 MG  
Fosfomycin 60 MG

## INDICATIONS:

T-Fospharma is reliable for the treatment of poultry diseases, caused by Gram-positive, Gram-negative and Mycoplasmas in cases of: mycoplasmosis, colibacillosis, chronic respiratory disease in poultry, Staphylococcus infections, Listeriosis, Avian Cholera, infectious Coryza, and diseases caused by Tylosin and / or Fosfomycin susceptible organisms.

## DOSAGE

500 gm / 1000 Litres of drinking water or as advised by a veterinarian.

## SAFETY & STORAGE PRECAUTIONS

KEEP OUT OF THE REACH AND SIGHT OF CHILDREN. STRICTLY FOR VETERINARY USE ONLY. STORE THE PRODUCT IN THE CLOSED, ORIGINAL PACKAGING PROTECTED FROM DIRECT LIGHT, AND KEEP ITS LABEL FOR CORRECT IDENTIFICATION.

A PHARMACEUTICAL PRODUCT.  
PRODUCED IN TURKEY.  
FOR VETERINARY USE ONLY.  
STORE IN A DRY & COOL PLACE.









# RESPICOL™

## 2 IN 1



**DOSE FORM**  
Oral Solution



**NET CONTENTS**  
1000 mL (1 Litre)



Supplement Group | 1 L  
PHS: 18001



### COMPOSITION

Each 1 Litre contains:

PARACETAMOL	250 g
VITAMIN C	100 g
MENTHOL	20 g

### INDICATIONS

- › Helps to clear air passage in lungs to improve respiration system.
  - › Improves resistance to various respiratory and lungs infections.
  - › For heat stress cases caused by extreme high temperature.
  - › For better immune system against various diseases.
  - › Improves feed intake, weight gain, and egg production.
- Paracetamol is a strong analgesic with a wide dose range, stimulates growth hormone activity. Vitamin C is vital for proper immune system activity while menthol has local anesthetic.

### DOSAGE

1 Litre / 2000 Litres of drinking water or as advised by a veterinarian.

### SAFETY & STORAGE PRECAUTIONS

KEEP OUT OF THE REACH AND SIGHT OF CHILDREN. STRICTLY FOR VETERINARY USE ONLY. STORE THE PRODUCT IN THE CLOSED, ORIGINAL PACKAGING PROTECTED FROM DIRECT LIGHT, AND KEEP ITS LABEL FOR CORRECT IDENTIFICATION.

A PHARMACEUTICAL PRODUCT.  
PRODUCED IN TURKEY.  
FOR VETERINARY USE ONLY.  
STORE IN A DRY & COOL PLACE.



# PHARMA-C™

Plus phytogetic extracts  
and Citrus



**DOSE FORM**  
Oral Solution



**NET CONTENTS**  
1000 mL (1 Litre)



Supplement Group **1 L**  
PHS: 18002



## COMPOSITION

Vitamin C (ascorbic acid)

Plus phytogetic extracts and Citrus

PHARMA-C is a very stable polyethoxylated ascorbic acid designed for better animal performance, for prevention of heat stress and for enhanced immunity.

PHARMA-C plays an important role in the biosynthesis of Calcitriol from vitamin D3 metabolic conversion – which helps as an immune modulator and helps build stronger bones.

PHARMA-C helps in production of indigenous Vitamin C during heat and other stresses.

## How does PHARMA-C work?

- 1- Maintains the immune system (phytogetic extracts of quercetin)
- 2- Optimizes the production of stress hormone - cortisol (extracts of *Atrocorpus lakoocha* and *Carisone*)
- 3- Supports endogenous vitamin C to prevent the heat stress (extracts of *Tamarandus*, and Citrus)

## How to use PHARMA-C ?

For oral administration via drinking water.

**Cattle and horses:** 10 ml per 40 kg body weight for 3-5 days.

**Sheep, goats and calves:** 5 ml per 20 kg body weight for 3-5 days.

**Poultry:** 250ml per 1000 L drinking water.

## SAFETY & STORAGE PRECAUTIONS

KEEP OUT OF THE REACH AND SIGHT OF CHILDREN. STRICTLY FOR VETERINARY USE ONLY. STORE THE PRODUCT IN THE CLOSED, ORIGINAL PACKAGING PROTECTED FROM DIRECT LIGHT, AND KEEP ITS LABEL FOR CORRECT IDENTIFICATION.

A PHARMACEUTICAL PRODUCT.  
PRODUCED IN TURKEY.  
FOR VETERINARY USE ONLY.  
STORE IN A DRY & COOL PLACE.



# FARMATONIC™

Supplement Group | 1 L  
PHS: 18003

 **DOSE FORM**  
Oral Solution

 **NET CONTENTS**  
1000 mL (1 Litre)



**COMPOSITION** FARMATONIC is based on a synergistic combination of selected herbs rich in phytochemical actives and natural essential amino acid complex, specifically designed to optimize liver functions, stabilize gut and improve digestion resulting in maximum performance in poultry.

Each 1 Litre contains:

Sorbitol	200 g
DL-Methionine	10 g
Choline Chloride	18.75 g
L-Carnitine HCl	25 g
Magnesium sulphate	10 g

#### How does FARMATONIC work?

PERFECT is a liver tonic that has energized phytochemical extracts that reflow life energy in the Liver. These stimulate the liver cells with co-factors to secrete enzymes for digestion, elimination and deactivation of enteric pathogens and toxins. As an antioxidant, it scavenges the free radicals generated during detoxification. It unclogs the filters thereby aiding the filtration process. It prevents future build-up thus restoring the natural function of the liver.

- 1 Deactivation of Mycotoxins (extracts of Chelidonium majus and Carduus marianus)
- 2 Stimulates hepatic filtration at cellular level (extracts of Ceanothus americanus and Myrica cerifera)
- 3 Antioxidant activity of hepatic cells during detoxification (extracts of Grindelia Robusta)

**How to use FARMATONIC?** For oral administration via drinking water.

**Cattle and horses:** 3 - 4 ml per 40 kg body weight for 3-5 days.

**Sheep, goats and calves:** 3 - 4 ml per 20 kg body weight for 3-5 days.

**Poultry:** 250ml/ml per 1000 litres of drinking water for 5 - 7 days.

#### SAFETY & STORAGE PRECAUTIONS

KEEP OUT OF THE REACH AND SIGHT OF CHILDREN. STRICTLY FOR VETERINARY USE ONLY. STORE THE PRODUCT IN THE CLOSED, ORIGINAL PACKAGING PROTECTED FROM DIRECT LIGHT, AND KEEP ITS LABEL FOR CORRECT IDENTIFICATION.

A PHARMACEUTICAL PRODUCT.  
PRODUCED IN TURKEY.  
FOR VETERINARY USE ONLY.  
STORE IN A DRY & COOL PLACE.



# ACIDOSIS-L™

New formulation to treatment of digestive disorders.

 **DOSE FORM**  
Oral Solution

 **NET CONTENTS**  
1000 mL (1 Litre)

Supplement Group **1 L**  
PHS: 18004



## COMPOSITION

Each 1 Litre contains:

Sodium Bicarbonate 100.000 mg  
Yeast extract 30.000 mg

## INDICATIONS

VSodium Bicarbonate is indicated in the treatment of metabolic acidosis which may be due to severe renal disease, uncontrolled diabetes, circulatory insufficiency due to shock or severe dehydration, cardiac arrest and severe primary lactic acidosis. Sodium Bicarbonate is also indicated in severe diarrheas which is often accompanied by a significant loss of bicarbonate sodium is indicated in the treatment of metabolic acidosis in cattle, horses, sheep, and dogs depending upon causative factor. Yeast boost digestion, reduce health risks for dairy cows on high starch diets, yeast benefit diets that are high in starch because of the risk of rumen acidosis and the negative associative effects of low pH on fiber digestion.

## DOSAGE

**Cows** : 40 ml / day / animal.  
**Sheeps** : 20 ml / day / animal.  
**Camels** : 40 ml / day / animal.  
**Goats** : 15 ml / day / animal.  
**Calves** : 20 ml / day / animal.  
**Horses** : 30 ml / day / animal.  
**Layers** : 1 ml / day / animal.  
**Young camels** : 10 ml / day / animal.

## SAFETY & STORAGE PRECAUTIONS

KEEP OUT OF THE REACH AND SIGHT OF CHILDREN. STRICTLY FOR VETERINARY USE ONLY. STORE THE PRODUCT IN THE CLOSED, ORIGINAL PACKAGING PROTECTED FROM DIRECT LIGHT, AND KEEP ITS LABEL FOR CORRECT IDENTIFICATION.



  
**Pharmavet**  
ANIMAL HEALTH



A PHARMACEUTICAL PRODUCT.  
PRODUCED IN TURKEY.  
FOR VETERINARY USE ONLY.  
STORE IN A DRY & COOL PLACE.



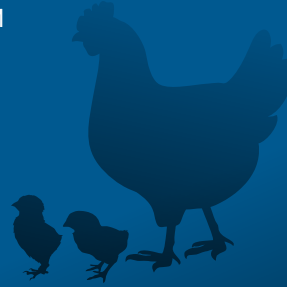


# Vit-AD3E PHARMA<sup>TM</sup>

Supplement Group **1 L**  
PHS: 18012

 **DOSE FORM**  
Oral Solution

 **NET CONTENTS**  
1000 mL (1 Litre)



## COMPOSITION

Each 1 Litre contains:

Vitamin A	100 000 000 I.U.
Vitamin D3	20 000 000 I.U.
Vitamin E	40 000 mg

## INDICATIONS

- › Poultry growth rates promotion and improves feed efficiency.
- › Prevention of vitamins (A, D3, E) insufficiencies in poultry.
- › Strengthens resistance and immunity to the diseases.
- › Improvement of egg production and hatchability.

## DOSAGE

Recommended dose for poultry: 1 mL per 4 Litres of drinking water for 3-5 days or as advised by a veterinarian.

## SAFETY & STORAGE PRECAUTIONS

KEEP OUT OF THE REACH AND SIGHT OF CHILDREN. STRICTLY FOR VETERINARY USE ONLY. STORE THE PRODUCT IN THE CLOSED, ORIGINAL PACKAGING PROTECTED FROM DIRECT LIGHT, AND KEEP ITS LABEL FOR CORRECT IDENTIFICATION.

A PHARMACEUTICAL PRODUCT.  
PRODUCED IN TURKEY.  
FOR VETERINARY USE ONLY.  
STORE IN A DRY & COOL PLACE.



# Vit-E+S PHARMA™

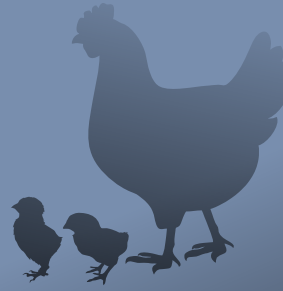
Supplement Group | 1 L  
PHS: 18006



**DOSE FORM**  
Oral Solution



**NET CONTENTS**  
1000 mL (1 Litre)



## COMPOSITION

Each 1 Litre contains:

Vitamin E	12 gm
Sodium selenite	2.4 gm

## INDICATIONS

Vitamin E and Selenium act synergistically to prevent various types of diseases in animals. Vitamin E is a natural antioxidant that protects cell structures against damage and is also essential for normal metabolism of muscle tissue and proper functioning of the reproductive system. Selenium participates in the metabolic redox processes and acts as a cofactor of glutathione peroxidase.

## DOSAGE

1 mL per 4 Litres of drinking water or as advised by a veterinarian.

## SAFETY & STORAGE PRECAUTIONS

KEEP OUT OF THE REACH AND SIGHT OF CHILDREN. STRICTLY FOR VETERINARY USE ONLY. STORE THE PRODUCT IN THE CLOSED, ORIGINAL PACKAGING PROTECTED FROM DIRECT LIGHT, AND KEEP ITS LABEL FOR CORRECT IDENTIFICATION.

A PHARMACEUTICAL PRODUCT.  
PRODUCED IN TURKEY.  
FOR VETERINARY USE ONLY.  
STORE IN A DRY & COOL PLACE.



# PHOSPHOCAL™

Supplement Group **1 L**  
PHS: 18007

 **DOSE FORM**  
Oral Solution

 **NET CONTENTS**  
1000 mL (1 Litre)

## COMPOSITION

### Each 1 Ml contains :

Phosphor 90 mg - Manganese 10 mg - Iron 10 mg - Zinc 10 mg - Sodium 5.5 mg  
- Cobalt 124 mcg - Copper 5.5 mg - Calcium 15 mg - Choline chloride 80 mg

## INDICATIONS

- Increase the egg production.
- Achieve faster growth.
- Increase the weight in Broilers.
- Prevents cases of rachitis (rickets).
- Increases appetite in Broilers.
- Stimulates the metabolism.
- Prevents cases of hypocalcemia.
- Increase the hardness of eggs shell.

## DOSAGE

For oral administration in drinking water.

Recommended dose..... 500 ml per 1000 litres of Drinking water

## SAFETY & STORAGE PRECAUTIONS

KEEP OUT OF THE REACH AND SIGHT OF CHILDREN. STRICTLY FOR VETERINARY USE ONLY. STORE THE PRODUCT IN THE CLOSED, ORIGINAL PACKAGING PROTECTED FROM DIRECT LIGHT, AND KEEP ITS LABEL FOR CORRECT IDENTIFICATION.

A PHARMACEUTICAL PRODUCT.  
PRODUCED IN TURKEY.  
FOR VETERINARY USE ONLY.  
STORE IN A DRY & COOL PLACE.

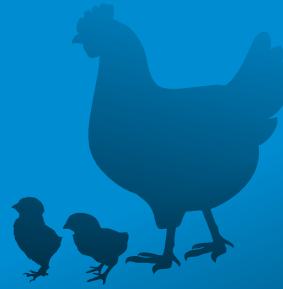


# DIURVET™

**500 GM**  
Supplement Group  
PHS: 18008

 **DOSE FORM**  
Oral Solution

**FOR ANIMAL  
USE ONLY.**



## COMPOSITION

### Each 1 gm Contains:

Ammonium Chloride 650 mg - Betaine HCL 80 MG - Methionine 80 mg - Sorbitol 50 mg - Vitamin C 100 mg - Dextrose up to 1gm

## INDICATIONS:

- Diuretic in case of acute and chronic renal failure.
- Renal tonic especially in long term use of sulphonamide drugs or in case of Gumboro infection.
- Prevention and treatment of urinary calculi.
- Improves the activities of drugs acting in acidic media such as ampicillins and amoxicillin and consequently sterile the kidney and ureters.
- Rich with vitamins especially vit. C that helps in heat stress.
- Improves hepatic enzymes and liver function.
- To reduce oxidative stress & improve immunity under stress conditions.

## DOSAGE

**Poultry:** 1 gm / 2 liter of drinking water

**Other animals:** 10 gm / animal / day or as advice by veterinarian

## SAFETY & STORAGE PRECAUTIONS

KEEP OUT OF THE REACH AND SIGHT OF CHILDREN. STRICTLY FOR VETERINARY USE ONLY. STORE THE PRODUCT IN THE CLOSED, ORIGINAL PACKAGING PROTECTED FROM DIRECT LIGHT, AND KEEP ITS LABEL FOR CORRECT IDENTIFICATION.

A PHARMACEUTICAL PRODUCT.  
PRODUCED IN TURKEY.  
FOR VETERINARY USE ONLY.  
STORE IN A DRY & COOL PLACE.

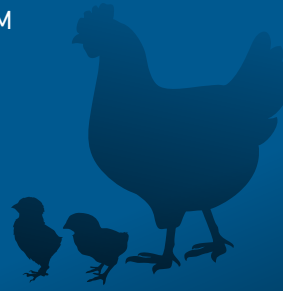


# AMINOVITA-WSP™

**500 GM**  
Supplement Group  
PHS: 18009

 **DOSE FORM**  
Oral Solution

**FOR ANIMAL  
USE ONLY.**



## COMPOSITION

AMINOVITA-WSP is a synergistic combination of multivitamins, minerals and essential amino-acids to improve digestion and increase growth rate.

### Each 1 kg contains:

Vit. A 1,000,000 IU - Calcium pantothenate 5500 mg Vit. D3 200,000 IU - Folic acid 100 mg - Vit. E 300 IU - Ferrus sulphate 3000 mg - Vit. B1 500 mg - Copper sulphate 350 mg - Vit. B2 25 mg - Zinc sulphate 8000 mg - Vit. B6 200 mg - Manganese sulphate 3500 mg - Vit. B12 5 mg Methionine 5000 mg - Vit. K3 500 mg - Lysine HCL 5000 mg - Biotin 15 mg - Choline bitartrate 1000 mg - Nicotinic acid 1250 mg - Sodium selenite 100 mg - Dextrose .....up to 1 kg

## INDICATIONS :

AMINOVITA-WSP is a well balanced combination of essential vitamins, minerals and amino acids for calves, cattle, goats, poultry, and sheep . AMINOVITA-WSP is used for:

- › Prevention or treatment of vitamin, mineral or amino acid deficiencies in farm animals.
- › Prevention or treatment of stress (caused by vaccination, diseases, transport, high humidity, high temperatures or extreme temperature changes).
- › Improvement of feed conversion.

## DOSAGE

**Poultry:** 1 gm / 4 liters of drinking water for 3-5 days

**Sheep and goats:** 10 gm / head / day

**Horses:** 60 gm / head / day for 3-5 days

**Cattle and camels:** 100 gm / head / day for 3-5 days

## SAFETY & STORAGE PRECAUTIONS

KEEP OUT OF THE REACH AND SIGHT OF CHILDREN. STRICTLY FOR VETERINARY USE ONLY. STORE THE PRODUCT IN THE CLOSED, ORIGINAL PACKAGING PROTECTED FROM DIRECT LIGHT, AND KEEP ITS LABEL FOR CORRECT IDENTIFICATION.

A PHARMACEUTICAL PRODUCT.  
PRODUCED IN TURKEY.  
FOR VETERINARY USE ONLY.  
STORE IN A DRY & COOL PLACE.





# MINERAL+ PHARMA<sup>TM</sup>

Supplement Group | 1 L  
PHS: 18011

 **DOSE FORM**  
Oral Solution

 **NET CONTENTS**  
1000 mL (1 Litre)



## COMPOSITION

Each 1 Litre contains :

Phosphorus	100 gm
Calcium	30 gm
Magnesium	12 gm
Sodium	12 gm
Zinc	2 gm
Manganese	2 gm
Copper	2 gm

## INGREDIENTS:

Macro and micro elements necessary for proper functioning of the body of animals. They are necessary for normal and rapid growth of young animals, and also improve the functioning of the body. The product is especially recommended for animals in intensive fattening period and a period of intense laying and lactation, and the period before calving and pasture for cows.

## DOSEAGE

1 mL per 2 Litres of drinking water or as advised by a veterinarian

## SAFETY & STORAGE PRECAUTIONS

KEEP OUT OF THE REACH AND SIGHT OF CHILDREN. STRICTLY FOR VETERINARY USE ONLY. STORE THE PRODUCT IN THE CLOSED, ORIGINAL PACKAGING PROTECTED FROM DIRECT LIGHT, AND KEEP ITS LABEL FOR CORRECT IDENTIFICATION.

A PHARMACEUTICAL PRODUCT.  
PRODUCED IN TURKEY.  
FOR VETERINARY USE ONLY.  
STORE IN A DRY & COOL PLACE.





# B-PLUS PHARMA<sup>TM</sup>

Supplement Group | 1 L  
PHS: 18010

 **DOSE FORM**  
Oral Solution

 **NET CONTENTS**  
1000 mL (1 Litre)



## COMPOSITION

**Each 1 Litre contains :**

Vitamin B1 200 mg  
Vitamin B2 400 mg  
Vitamin B5 400 mg  
Vitamin B6 200 mg  
Vitamin B12 0.5 mg  
Vitamin PP 3000 mg

## INGREDIENTS:

The product contains a complex of vitamins B, in this group vitamins play an important role in the metabolism of carbohydrates, fats and proteins. They are also needed for proper functioning of the nervous system, epithelial tissue and muscle. Vitamins B help the period of growth and development, disorders of nervous system, lower rates of hatching, changes in the plumage, cannibalism, during treatment with antibiotics, in various types of stressful situations.

## DOSAGE

1 mL per 2 Litres of drinking water or as advised by a veterinarian

## SAFETY & STORAGE PRECAUTIONS

KEEP OUT OF THE REACH AND SIGHT OF CHILDREN. STRICTLY FOR VETERINARY USE ONLY. STORE THE PRODUCT IN THE CLOSED, ORIGINAL PACKAGING PROTECTED FROM DIRECT LIGHT, AND KEEP ITS LABEL FOR CORRECT IDENTIFICATION.

A PHARMACEUTICAL PRODUCT.  
PRODUCED IN TURKEY.  
FOR VETERINARY USE ONLY.  
STORE IN A DRY & COOL PLACE.

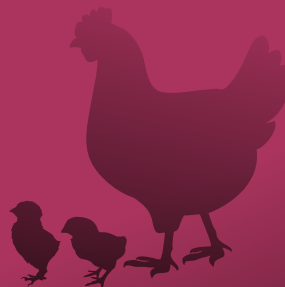


# BIOTREAT™

Supplement Group **1 L**  
PHS: 18022

 **DOSE FORM**  
Oral Solution

 **NET CONTENTS**  
1000 mL (1 Litre)



## COMPOSITION

BIOTREAT Contains Garlic extract (Allicin) Oregano extract and Organic seaweed. BIO-TREAT is a powerful remedy against infectious diseases and as an alternative agent to antibiotics. It is a broad-spectrum antibacterial agent effective against a multiple resistant of bacteria strains and most pathogens in poultry such as: Staphylococcus aureus, S. epidermidis, Pseudomonas aeruginosa, Bacillus Cereus, Escherichia coli, Salmonella enteritidis, it is an excellent alternative for ionophore antibiotics thereby providing protection against E. tenella infection in birds. It can also prevent and treat CRD, E.Coli, Salmonella, Campylobacter.

## BENEFITS:

Helps to reduce the incidence of bacterial and viral diseases.  
Helps the birds to recover faster during disease outbreaks.  
Helps to improve the antibody titre with vaccinations.  
Reduces the total flock mortality, and improves the overall performance of the birds.  
B complex vitamins. Support metabolic activity associated with energy production, particularly following stress. Sorbitol. Providing available energy to help maintain active feeding behaviour and encourage performance.

## How to use BIOTREAT?

BIOTREAT should be given twice a week for all age group of birds as prevention. This is irrespective of any symptoms of viral infection.

At the onset of infection 250ml\1000 L drinking water.  
Mild to moderate infection 500ml\1000 L drinking water

## SAFETY & STORAGE PRECAUTIONS

KEEP OUT OF THE REACH AND SIGHT OF CHILDREN. STRICTLY FOR VETERINARY USE ONLY. STORE THE PRODUCT IN THE CLOSED, ORIGINAL PACKAGING PROTECTED FROM DIRECT LIGHT, AND KEEP ITS LABEL FOR CORRECT IDENTIFICATION.

A PHARMACEUTICAL PRODUCT.  
PRODUCED IN TURKEY.  
FOR VETERINARY USE ONLY.  
STORE IN A DRY & COOL PLACE.

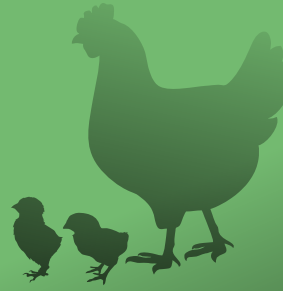


# PHARMAVIT+™

Supplement Group **1 L**  
PHS:18021

 **DOSE FORM**  
Oral Solution

 **NET CONTENTS**  
1000 mL (1 Litre)



## COMPOSITION

### Each 1 Litre contains:

Vitamin A 10.000.000 IU, Vitamin D3 1.000.000 IU, Vitamin E 4.000 IU, Vitamin B1 1,50 g, Vitamin B2 3,00 g, Vitamin B6 1,50 g, Vitamin B12 1,25 mg, Inositol 2,00 g, Nicotinamide 5,00 g, Pantenol 4,00 g, Aspartic acid 3,60 g, Glutamic acid 6,30 g, Serine 2,70 g, Histidine 0,85 g, Glycine 12,00 g, Threonine 2,15 g, Alanine 2,65 g, Arginine 2,20 g, Tyrosine 1,25 g, Valine 2,90 g, Methionine 2,50 g, Isoleucine 1,90 g, Phenylalanine 1,95 g, Leucine 3,20 g, Lysine 3,15 g, Cystine 0,60 g, Proline 2,10 g.

## INDICATIONS

Based on vitamins and amino acids, with biological multiple functions and energy intake.

Prevention and treatment of deficiencies of vitamins, amino acids and proteins.

Prevention and treatment of stress situations, which present with weakness and decreased of immune response caused by vaccination, diseases, transport, high temperatures and humidity, extreme temperature changes, and diet changes.

After treatment with antibiotics and similar.

During infectious and parasitic diseases.

During the low production, and to maintain peak production.

Improved feed conversion during fattening, and prevents digestive problems.

In laying hens birds, improves production, size and maintains the quality of the egg.

## DOSAGE

250 ml \ 1000 L water or as advice by veterinarian

## SAFETY & STORAGE PRECAUTIONS

KEEP OUT OF THE REACH AND SIGHT OF CHILDREN. STRICTLY FOR VETERINARY USE ONLY. STORE THE PRODUCT IN THE CLOSED, ORIGINAL PACKAGING PROTECTED FROM DIRECT LIGHT, AND KEEP ITS LABEL FOR CORRECT IDENTIFICATION.

A PHARMACEUTICAL PRODUCT.  
PRODUCED IN TURKEY.  
FOR VETERINARY USE ONLY.  
STORE IN A DRY & COOL PLACE.



# PHARMAMINO+™

Supplement Group **1 L**  
PHS:18019

 **DOSE FORM**  
Oral Solution

 **NET CONTENTS**  
1000 mL (1 Litre)

## COMPOSITION

### Each 1 Litre contains :

Essential component analysis

Vitamin A5,000,000IU - Vitamin D3 5,000,000IU - Vitamin B2 2,000mg - Vitamin B1 3,000 mg - Vitamin E 1,000IU - Vitamin K3 1,000 mg - Vitamin C 2,000mg - Vitamin B6 1,000 mg - Vitamin H 10mg - Vitamin B12 2 mg - Choline Bitartrate 30,000 mg -DL-Methionine 10,000mg Nicotinamide 5,000mg Calcium Pantothenate 5,000mg L-lysine 2,000mg Folic acid 500mg Also Contains the following Glycine, cystine, alanine, phenylalanine, tryptophan, leucine, isoleucine, valine, praline, threonine, serine, glutamine acid, aspartic acid, Phosphorus, Magnesium and Zinc.

## INDICATIONS

A balanced liquid combination of vitamins, minerals and amino acids designed for the additional, shortterm supplementation via the drinking water. Lovit Amino Plus is especially indicated for the prevention of hypovitaminosis and mineral and amino acid deficiencies in case of vaccination, subclinical diseases, changes of feed composition and other stress involving conditions.

## DOSSAGE

Cow, horse and camel 10 ml per day

Calves, goats and sheep 5 ml Per day

**Poultry:** 250ml per 1000 Drinking water or as advice by veterinarian

## SAFETY & STORAGE PRECAUTIONS

KEEP OUT OF THE REACH AND SIGHT OF CHILDREN. STRICTLY FOR VETERINARY USE ONLY. STORE THE PRODUCT IN THE CLOSED, ORIGINAL PACKAGING PROTECTED FROM DIRECT LIGHT, AND KEEP ITS LABEL FOR CORRECT IDENTIFICATION.

A PHARMACEUTICAL PRODUCT.  
PRODUCED IN TURKEY.  
FOR VETERINARY USE ONLY.  
STORE IN A DRY & COOL PLACE.

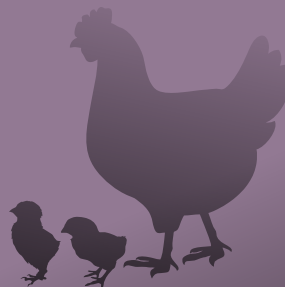


# CHICK-FARM™

Supplement Group **1 L**  
PHS: 18015

 **DOSE FORM**  
Oral Solution

 **NET CONTENTS**  
1000 mL (1 Litre)



Liquid formulation to support the metabolism and performance in critical phases.

#### INGREDIENTS:

Dextrose is a energy feed supplement used for extra energy in cases of tiredness and as sweetener in cases of medical treatment reducing the bitterness of the medical water. Plant extracts. Included to aid digestive activity by helping to sustain normal gut function and nutrient utilisation, including high energy fats.

L carnitine. To assist with the utilisation of fat from feed and the bird's body reserves.

Choline, Betaine and selected amino acids. Chosen specifically to support normal liver function, allowing for effective metabolism. Helps to reduce the liver load, particularly in layers.

B complex vitamins. Support metabolic activity associated with energy production, particularly following stress.

Sorbitol. Providing available energy to help maintain active feeding behaviour and encourage performance.

#### BENEFITS:

Improves FCR during first days of life, at peak performance and growth, diet change or periods of risk from poor digestion of feed.

Improving metabolism energy, liver support, and specific plant extracts to aid healthy digestion in broilers and layers. Use especially during or following reduced feed intake, poor feed utilisation, where birds appear depressed or where energy supply is sub-optimal to maintain normal growth or sufficient flock welfare.

#### DOSAGE

1 mL per 4 Litres of drinking water or as advised by a veterinarian.

#### SAFETY & STORAGE PRECAUTIONS

KEEP OUT OF THE REACH AND SIGHT OF CHILDREN. STRICTLY FOR VETERINARY USE ONLY. STORE THE PRODUCT IN THE CLOSED, ORIGINAL PACKAGING PROTECTED FROM DIRECT LIGHT, AND KEEP ITS LABEL FOR CORRECT IDENTIFICATION.

A PHARMACEUTICAL PRODUCT.  
PRODUCED IN TURKEY.  
FOR VETERINARY USE ONLY.  
STORE IN A DRY & COOL PLACE.









# CLON10™

Net Contents **100 mL**  
INJECTABLE GROUP :  
PHI 18002

## LIVESTOCK INJECTABLE

Cattle, Sheep, Goat, Camel

### CONSTITUENT GROUP CLASS: AVERMECTIN

For treatment and control of internal and external parasites

### COMPOSITION Each ml contains

Closantel 100 mg - Benzyl Alcohol BP 2% v/v - Propylene Glycol BP q.s.

### INDICATIONS

CLON10 is used for the control and treatment of internal parasites including adult and juvenile liver flukes (6-8 weeks), and external parasites. CLON10 is indicated for the effective treatment and control of the following parasites - Gastrointestinal roundworms (adult and fourth-stage larvae), Ostertagia Ostertagi, O.Lyrata, Haemonchus Placei, Trichostrongylus Axei, T.colubriformis, Cooperia Oncophora C.punctata, C.Pectinata, Bunostomum Phlebotomum, Nematodirus Helvetianus (adult only), Napathiger (adult only), Oesophagostomum Radiatum. Lungworms (adult and fourth-stage larvae): Dictyocaulus viviparus. Liver flukes (adult and juvenile) (6-8 weeks). Cattle Grub (parasitic stages): Hypoderma bovis, H. lineatum. Sucking Lice: Linognathus vituli, Haematopinus Eurytenuis, Solenopotes Capillatus. Mange Mites (cattle scab): Psoroptes Ovis, Sarcoptes Scabiei.

### DOSAGE

1 ml / 50 kg of bodyweight by Subcutaneous Injection only  
For further info, consult a veterinarian.

**Withdrawal Period Meat:** 30 days

A PHARMACEUTICAL PRODUCT.  
PRODUCED IN TURKEY.  
FOR VETERINARY USE ONLY.  
STORE IN A DRY & COOL PLACE.



# CLONMECTIN™

Net Contents **100 mL**  
INJECTABLE GROUP :  
PHI 18003

## LIVESTOCK INJECTABLE

Cattle, Sheep, Goat, Camel

### CONSTITUENT GROUP CLASS: AVERMECTIN

For treatment and control of internal and external parasites

### COMPOSITION Each ml contains :

Closantel 100 mg - Ivermectin B.P. 5 mg - Propylene Glycol B.P. q.s.

### INDICATIONS

For the treatment of mixed trematodes (flake, amphistomes) and nematode or arthropod infestation due to gastrointestinal roundworms, lungworms, eyeworms, warbles, mites and lice of dairy animals.

### DOSAGE

Dose chart	Body weight (kg)	Dose (ml) by subcutaneous route
Upto 50 kg	2 ml	
51-100 kg	4 ml	
101-150 kg	6 ml	
151-200 kg	8 ml	
201-250 kg	10 ml	
251-300 kg	12 ml	
301-350 kg	14 ml	
351-400 kg	16 ml	
401-450 kg	18 ml	
>450 kg	20 ml	

### WITHDRAWAL PERIOD

Meat: 30 days

A PHARMACEUTICAL PRODUCT.  
PRODUCED IN TURKEY.  
FOR VETERINARY USE ONLY.  
STORE IN A DRY & COOL PLACE.



# MECTISULON™

Net Contents **100 mL**  
INJECTABLE GROUP :  
PHI 18004

## LIVESTOCK INJECTABLE

Cattle, Sheep, Goat, Camel

### CONSTITUENT GROUP CLASS: AVERMECTIN

For treatment and control of internal and external parasites

### COMPOSITION Each ml contains :

Ivermectin B.P. 10 mg - Clorsulon U.S.P. 100 mg - Benzyl Alcohol (as preservative) B.P. 1.5% v/v - Propylene Glycol B.P. q.s.

### INDICATIONS

For treatment and control of gastrointestinal immature and adult roundworms.

Lung Worms: Both adult and Fourth - Stage larvae of Dictyocaulus viviparus.

Liver Flukes: Immature and adult Fasciola hepatica & Fasciolagigantica.

Eye Worm: Thelazia spp. Ectoparasites (Dermatobia hominis, Psoroptes bovis) Including Sucking Lice, Ticks & Mites.

### CONTRAINDICATION

Administration to lactating animals and pregnant heifers within 60 days of Calving. This product is not for intravenous or intramuscular use.

### DOSAGE

For subcutaneous administration. General: 1.0 ml per 50 kg bodyweight

Cattle: 1 ml per 50 kg bodyweight Sheep & Goat: 0.5 ml per 25 kg bodyweight

Withdrawal Period Meat: 30 days

A PHARMACEUTICAL PRODUCT.  
PRODUCED IN TURKEY.  
FOR VETERINARY USE ONLY.  
STORE IN A DRY & COOL PLACE.



# PHARMACAL™

Net Contents **100 mL**  
**INJECTABLE GROUP :**  
PHI 18005

## LIVESTOCK INJECTABLE

Cattle, Sheep, Goat, Camel

### CONSTITUENT GROUP CLASS: AVERMECTIN

For treatment and control of internal and external parasites

### COMPOSITION

**Each ml contains :** Calcium Levulinate USP 68 mg - Vitamin D3 5000 IU - Benzyl alcohol BP 1.5% v/v Water for injection BP q.s. - \*Required overages are added.

### INDICATIONS

Prevention and treatment of hypocalcaemia, debility, weakness, to improve health productivity and milk yield.

### CONTRAINDICATION

Administration to lactating animals and pregnant heifers within 60 days of Calving. This product is not for intravenous or intramuscular use.

### DOSAGE

For intramuscular use: Cattle and buffalo (Prepartum): 10-15ml thrice/week

Cattle and buffalo (postpartum): 15-20ml thrice/week

Cattle and buffalo (for other condition): 10ml thrice/week

Small animals: 1-5 ml thrice/week Or as directed by Veterinarian.

A PHARMACEUTICAL PRODUCT.  
PRODUCED IN TURKEY.  
FOR VETERINARY USE ONLY.  
STORE IN A DRY & COOL PLACE.



# DEXAPHARM™

Net Contents **100 mL**  
**INJECTABLE GROUP :**  
PHI 18006

## LIVESTOCK INJECTABLE

Cattle, Sheep, Goat, Camel

### CONSTITUENT GROUP CLASS: AVERMECTIN

For treatment and control of internal and external parasites

### COMPOSITION Each ml contains :

Dexamethasone sodium phosphate B.P. 2 mg eq. dexamethasone Phosphate. Methyl Hydroxybenzoate B.P. 0.15% w/v - Propyl Hydroxybenzoate B.P. 0.02% w/v (As Preservatives) - Water for injection B.P. q.s.

### INDICATIONS

Horse, Cattle: Treatment of anti-inflammatory or allergic conditions

Cattle: Induction of parturition. Treatment of primary ketosis (acetoaemia)

Horses: Treatment of arthritis, bursitis or tenosynovitis

### CONTRAINDICATION

Except in Emergency Situations, Do not Use in animals suffering from diabetes mellitus, Renal Insufficiency, Cardiac insufficiency, hyperadrenocorticism or osteoporosis. Do not use in viral infections during the viraemic stage or in cases of systemic mycotic infections. Do not use in animals suffering from gastrointestinal or corneal ulcers, or demodicosis. Do not administer intra-articularly where there is evidence of fractures, bacterial joint infections and aseptic bone necrosis. Do not use in known cases of hypersensitivity to the active substance, to corticosteroids and to any other ingredient of the product.

### DOSAGE

Dose according to bodyweight .For the treatment of inflammatory or allergic conditions the following average dose are advised .Horse, Cattle: 2ml / 50kg bodyweight . DEXAPHARM can be administered by Intravenous or intramuscular injection in horses and by intramuscular injection in Cattle.

### WITHDRAWAL PERIOD

Milk: 4 days Meat: 28 days

A PHARMACEUTICAL PRODUCT.  
PRODUCED IN TURKEY.  
FOR VETERINARY USE ONLY.  
STORE IN A DRY & COOL PLACE.





# TYLOFARM20™

Net Contents **100 mL**  
INJECTABLE GROUP :  
PHI 18007

## LIVESTOCK INJECTABLE

Cattle, Sheep, Goat, Camel

### CONSTITUENT GROUP CLASS: AVERMECTIN

For treatment and control of internal and external parasites

### COMPOSITION Each ml contains :

Tylosin Base B.P. 200 mg - Benzyl alcohol B.P. 2% w/v  
Propylene Glycol B.P. and - Water for Injection B.P. (1:1) q.s.

### INDICATIONS

Cattle: Tylosin Injection is indicated for use in the treatment of bovine respiratory complex (shipping fever, pneumonia) usually associated with *Pasteurella multocida* and *Actinomyces pyogenes*; foot rot (necrotic pododermatitis) and calf diphtheria caused by *Fusobacterium necrophorum* and metritis caused by *Actinomyces pyogenes*.

Sheep: Pneumonia, arthritis, contagious and acute agalaxia due *Mycoplasma agalactiae*, mastitis.

Goat: Contagious pleuropneumonia due *Mycoplasma mycoides*.

### CONTRAINDICATION

Not to be used in animals known to be hypersensitive to the active ingredient.

### DOSAGE

Cattle: Inject 5ml / 50kg bodyweight daily intramuscularly.

Do not inject more than 5 ml per injection site.

Sheep and Goats: 2ml / 20kg of bodyweight daily intramuscularly.

Do not inject more than 5 ml per injection site.

### WITHDRAWAL PERIOD

Meat - 7 days Milk - 4 days

A PHARMACEUTICAL PRODUCT.  
PRODUCED IN TURKEY.  
FOR VETERINARY USE ONLY.  
STORE IN A DRY & COOL PLACE.



# TYLOFARM30™

Net Contents **100 mL**

INJECTABLE GROUP :  
PHI 18008

## LIVESTOCK INJECTABLE

Cattle, Sheep, Goat, Camel

**CONSTITUENT GROUP CLASS: AVERMECTIN**

For treatment and control of internal and external parasites

### COMPOSITION Each ml contains :

Tylosin Base B.P. 300 mg - Benzyl alcohol B.P. 2% w/v - Propylene Glycol B.P. and Water for Injection B.P. (1:1) q.s.

### INDICATIONS

Cattle: Tylosin Injection is indicated for use in the treatment of bovine respiratory complex (shipping fever, pneumonia) usually associated with *Pasteurella multocida* and *Actinomyces pyogenes*; foot rot (necrotic pododermatitis) and calf diphtheria caused by *Fusobacterium necrophorum* and metritis caused by *Actinomyces pyogenes*.

Sheep: Pneumonia, arthritis, contagious and acute agalaxia due *Mycoplasma agalactiae*, mastitis.

Goat: Contagious pleuropneumonia due *Mycoplasma mycoides*.

### CONTRAINDICATION

Not to be used in animals known to be hypersensitive to the active ingredient.

### DOSAGE

Cattle: Inject 3ml /50kg bodyweight daily intramuscularly.

Do not inject more than 5 ml per injection site.

Sheep and Goats: 1ml/20kg of bodyweight daily intramuscularly.

Do not inject more than 5 ml per injection site.

### WITHDRAWAL PERIOD

Meat - 7 days Milk -4 days

A PHARMACEUTICAL PRODUCT.  
PRODUCED IN TURKEY.  
FOR VETERINARY USE ONLY.  
STORE IN A DRY & COOL PLACE.



# LEVASOL10™

Net Contents **100 mL**  
**INJECTABLE GROUP :**  
PHI 18009

## LIVESTOCK INJECTABLE

Cattle, Sheep, Goat, Camel

### CONSTITUENT GROUP CLASS: AVERMECTIN

For treatment and control of internal and external parasites

### COMPOSITION Each ml contains :

Levamisole Hydrochloride B.P. 100 mg - Benzyl Alcohol B.P. 1.5% w/v - Water for injection B.P. q.s.

### INDICATIONS

Levamisole is a broad spectrum anthelmintic for use in the treatment and control of nematode infections in Cattle and Sheep. Lungworms: Dictyocaulus spp. Gastro-intestinal worms: Trichostrongylus spp. Cooperi spp., Ostertagia spp., Haemonchus spp., Nematodirus spp., Bunostomum spp., Oesophagostomum spp., Chabertia spp.

### CONTRAINDICATION

It is safe for use in Cattle and Sheep at the recommended dosages. However, if the recommended dose rates are exceeded animals may exhibit signs of impaired motor function such as muscle tremors, head shaking and increased salivation which are of temporary nature. Although normally non-irritant, it may occasionally cause local reaction at the site of the injection; this should resolve naturally in a short period of time. Care should be taken to estimate accurately the bodyweight of animals to be treated before calculating the dosage. The product may be administered to pregnant or lactating animals but care should be taken when treating heavily pregnant animals or animals suffering stress from adverse weather conditions, poor nutrition, penning, handling, etc.

### DOSAGE

General: 1 ml per 20 kg body weight.. Divide large dosage between two or more injection sites.

### Withdrawal Period

Cattle: Meat: 28 days Sheep: Meat: 15 days

A PHARMACEUTICAL PRODUCT.  
PRODUCED IN TURKEY.  
FOR VETERINARY USE ONLY.  
STORE IN A DRY & COOL PLACE.



# OXFARM20™

Net Contents **100 mL**  
INJECTABLE GROUP :  
PHI 18010

## LIVESTOCK INJECTABLE

Cattle, Sheep, Goat, Camel

### CONSTITUENT GROUP CLASS: AVERMECTIN

For treatment and control of internal and external parasites

#### COMPOSITION Each ml contains :

Oxytetracycline Dihydrate B.P. eq. to Anhydrous Oxytetracycline 200 mg in 2-Pyrrolidone Vehicle system q.s.

INDICATIONS OXFARM20 is indicated in the treatment and control of disease in Cattle, Sheep and Pigs caused by or associated with, organisms sensitive to Oxytetracycline.

For the treatment and control of pasteurellosis and pneumonia caused by oxytetracycline sensitive organisms and as an aid in the treatment of infectious bovine keratoconjunctivitis (New Forest Disease) due to oxytetracycline sensitive strains of Moraxella bovis. This product may also be of value for foul-in-the-foot.

Sheep: For the control of enzootic abortion and pneumonia caused by oxytetracycline sensitive organisms. This product may be used as an aid in the treatment of foot rot, acute, severe mastitis and infections ovine keratoconjunctivitis (pink-eye).

#### DOSAGE

For intramuscular or subcutaneous administration: General: 1 ml per 10 kg body weight. This dosage can be repeated after 48 hours when necessary. Do not administer more than 20 ml in cattle, more than 5 ml in calves, goats and sheep per injection site.

#### WITHDRAWAL PERIOD

Milk for human consumption should not be taken during treatment. Milk intended for human consumption may be taken only after 7 days from the last treatment. Not for use in ewes producing milk for human consumption. Animals may only be slaughtered for human consumption after last treatment, according to the below table. Cattle & Sheep: Meat: 28 days Pigs: Meat: 35 days

A PHARMACEUTICAL PRODUCT.  
PRODUCED IN TURKEY.  
FOR VETERINARY USE ONLY.  
STORE IN A DRY & COOL PLACE.



# OXFARM30™

Net Contents **100 mL**  
INJECTABLE GROUP :  
PHI 18011

## LIVESTOCK INJECTABLE

Cattle, Sheep, Goat, Camel

### CONSTITUENT GROUP CLASS: AVERMECTIN

For treatment and control of internal and external parasites

### COMPOSITION Each ml contains:

Oxytetracycline Dihydrate B.P. eq. to Anhydrous Oxytetracycline 300 mg in 2-Pyrrolidone Vehicle system q.s.

### INDICATIONS

OXFARM20 is indicated in the treatment and control of disease in Cattle, Sheep and Pigs caused by or associated with, organisms sensitive to Oxytetracycline. For the treatment and control of pasteurellosis and pneumonia caused by oxytetracycline sensitive organisms and as an aid in the treatment of infectious bovine keratoconjunctivitis (New Forest Disease) due to oxytetracycline sensitive strains of *Moraxella bovis*. This product may also be of value for foul-in-the-foot.

Sheep: For the control of enzootic abortion and pneumonia caused by oxytetracycline sensitive organisms. This product may be used as an aid in the treatment of foot rot, acute, severe mastitis and infections ovine kerato conjunctivitis (pink-eye).

### DOSAGE

For intramuscular or subcutaneous administration: General: 1 ml per 15 kg body weight. This dosage can be repeated after 48 hours when necessary. Do not administer more than 15 ml in cattle, more than 3 ml in calves, goats and sheep per injection site.

### Withdrawal Period

Milk for human consumption should not be taken during treatment. Milk intended for human consumption may be taken only after 7 days from the last treatment. Not for use in ewes producing milk for human consumption. Animals may only be slaughtered for human consumption after last treatment, according to the below table. Cattle & Sheep: Meat: 28 days Pigs: Meat: 35 days

A PHARMACEUTICAL PRODUCT.  
PRODUCED IN TURKEY.  
FOR VETERINARY USE ONLY.  
STORE IN A DRY & COOL PLACE.





# MECTIFARM™

Net Contents **100 mL**  
INJECTABLE GROUP :  
PHI 18001

## LIVESTOCK INJECTABLE

Cattle, Sheep, Goat, Camel

### CONSTITUENT GROUP CLASS: AVERMECTIN

For treatment and control of internal and external parasites

### COMPOSITION Each ml contains :

Ivermectin BP 20 mg  
Benzyl Alcohol (as preservative)  
BP 1.5% v/v Propylene Glycol BP q.s.

### DESCRIPTION

Ivermectin belongs to the group of avermectins and acts against roundworms and parasites.

### INDICATIONS

Treatment of gastrointestinal roundworms and lungworm infections, lice, oestriasis and scabies in calves, cattle, goats, sheep

### DOSAGE

To be given subcutaneously cattle, sheep 1 ml /60kg bodyweight

### Withdrawal Period

Meat: Animal must not be slaughtered after fast dose for human consumption.  
Cattle: 21 days  
Sheep: 35 days

A PHARMACEUTICAL PRODUCT.  
PRODUCED IN TURKEY.  
FOR VETERINARY USE ONLY.  
STORE IN A DRY & COOL PLACE.





# GENTFARM10™

Net Contents **100 mL**  
INJECTABLE GROUP :  
PHI 18013

## LIVESTOCK INJECTABLE

Cattle, Sheep, Goat, Camel

### CONSTITUENT GROUP CLASS: AVERMECTIN

For treatment and control of internal and external parasites

### COMPOSITION Each ml contains :

Gentamicin Sulphate BP eq. to Gentamicin 100 mg  
Methyl Hydroxybenzoate BP 0.18% w/v (As Preservative)  
Propyl Hydroxybenzoate BP 0.02% w/v (As Preservative)  
Water for injection BP q.s.

### INDICATIONS

Gastrointestinal, respiratory infections, arthritis, poly-arthritis, meningitis, mastitis & metritis caused by Gentamicin sensitive bacteria like E.Coli, Pasteurella, Klebsiella and salmonella spp., in Calves, Cattle, Horses, Goats and Sheep.

### DOSAGE

For intramuscular administration:

General: Twice daily 1 ml per 25 kg body weight for 3 days.

### Withdrawal Period

For meat : 7 days.

For milk : 3 days.

A PHARMACEUTICAL PRODUCT.  
PRODUCED IN TURKEY.  
FOR VETERINARY USE ONLY.  
STORE IN A DRY & COOL PLACE.



# SULFARM333™

Net Contents **100 mL**  
**INJECTABLE GROUP :**  
PHI 18014

## LIVESTOCK INJECTABLE

Cattle, Sheep, Goat, Camel

### CONSTITUENT GROUP CLASS: AVERMECTIN

For treatment and control of internal and external parasites

### COMPOSITION Each ml contains :

Sulfadimidine Sodium B.P. 333 mg

Benzyl Alcohol B.P. 1% v/v

Water for Injection B.P. q.s.

### INDICATIONS

SULFARM333 is indicated for pneumonia, foot rot, diphtheria in Calves, actinobacillosis, coli-bacillosis, salmonellosis, pasteurellosis, enteritis, poly-arthritis, streptococcal mastitis, dysentery, lymphangitis, young's septicemia and coccidiosis in Sheep and Goat, Cattle and Calves, For treatment of respiratory, lymphangitis, young's septicemia and coccidiosis in Sheep and Goat, Cattle and Calves.

### CONTRAINDICATION

Contraindicated in known cases of hypersensitivity to sulphonamides and in animals with severe liver damage or blood dyscrasias.

### DOSAGE

For subcutaneous and slow intravenous administration.

Cattle: 3 ml per 10 kg bodyweight on the first day, followed by 3 ml per 10 kg bodyweight on following 3-5 days.

A PHARMACEUTICAL PRODUCT.  
PRODUCED IN TURKEY.  
FOR VETERINARY USE ONLY.  
STORE IN A DRY & COOL PLACE.



# OLIGOVITA™

Net Contents **100 mL**  
INJECTABLE GROUP :  
PHI 18015

## LIVESTOCK INJECTABLE

Cattle, Sheep, Goat, Camel

### CONSTITUENT GROUP CLASS: AVERMECTIN

For treatment and control of internal and external parasites

### COMPOSITION Each ml contains :

Vitamin A propionate 18,000 - Vitamin D3. U1,000 IU - Vitamin E acetate.  
20 IU Vitamin B1. 10 mg- Vitamin B2 7 mg- Vitamin B6 3 mg-  
Nicotinamide 35 mg Vitamin B12 0.05 mg d-Panthenol 25 mg

### INDICATIONS

Vitamin supplement, especially necessary during periods of stress, clinical or subclinical diseases, during pregnancy, in hot and humid climates, when there are vitamin deficiencies in the feed, etc. Hypovitaminosis, growth problems, convalescence, anorexia, prophylactic treatment.

### DOSAGE

By a single intramuscular injection:

Cattle : 10 mL. Sheep : 5 mL. Piglets < 10 kg : 2 mL. Piglets < 50 kg : 4 mL.

### WITHDRAWAL TIMES:

milk : none.

meat : none.

A PHARMACEUTICAL PRODUCT.  
PRODUCED IN TURKEY.  
FOR VETERINARY USE ONLY.  
STORE IN A DRY & COOL PLACE.



# AD3E 400.™

Net Contents **100 mL**  
INJECTABLE GROUP :  
PHI 18016



## LIVESTOCK INJECTABLE

Cattle, Sheep, Goat, Camel

### CONSTITUENT GROUP CLASS: AVERMECTIN

For treatment and control of internal and external parasites

### COMPOSITION

Each ml contains:

Vitamin A 400,000 - Vitamin D3 IU100,000 IU - Vitamin E 50 mg

### INDICATIONS

Prevention and treatment of deficiencies in vitamin A, D3 and E, especially with young and pregnant animals

### DOSAGE

By a single intramuscular or subcutaneous injection:

Horses : 2 ml Cattle : 5 ml Calves : 2 ml Calves Sheep, goats : 1 ml Piglets (10-50 kg) : 0.5 ml

### WITHDRAWAL TIMES:

milk : none.

meat : none.

A PHARMACEUTICAL PRODUCT.  
PRODUCED IN TURKEY.  
FOR VETERINARY USE ONLY.  
STORE IN A DRY & COOL PLACE.



# B-PLEX™

Net Contents **100 mL**

**INJECTABLE GROUP :**  
PHI 18017

## LIVESTOCK INJECTABLE

Cattle, Sheep, Goat, Camel

### CONSTITUENT GROUP CLASS: AVERMECTIN

For treatment and control of internal and external parasites

### COMPOSITION

Each ml contains : Vitamin B1 ...35 mg - Vitamin B12 ...2 mcg -Vitamin B2 ...0.5 mg - Nicotinamide... 25 mg - Vitamin B6..... 7 mg -Vitamin C ....100 mg

### INDICATIONS

Prevention and treatment of anaemia, muscle weakness, obesity, sensibility disorders, neuritis, regeneration and treatment of mechanically impaired peripheral nerves, digestive problems (gastro-enteritis, diarrhoea, stomatitis), dermatological problems (eczema, pruritus, loss of hair), prevention or assistance in treatment of diseases.

### DOSAGE

By intramuscular or subcutaneous injection:

Horses and cattle : 20 ml. Calves and foals : 5 ml. Piglets : 1 ml.

### WITHDRAWAL TIMES:

milk : none.

meat : none.

A PHARMACEUTICAL PRODUCT.  
PRODUCED IN TURKEY.  
FOR VETERINARY USE ONLY.  
STORE IN A DRY & COOL PLACE.





# AMOXFARM LA™

Net Contents **100 mL**  
INJECTABLE GROUP :  
PHI 18018

## LIVESTOCK INJECTABLE

Cattle, Sheep, Goat, Camel

### CONSTITUENT GROUP CLASS: AVERMECTIN

For treatment and control of internal and external parasites

### COMPOSITION

Each ml contains : Amoxycillin Trihydrate 200 mg

### INDICATIONS

Enteritis (E. coli, Salmonella, Clostridium), Streptococcus infections like arthritis and meningitis, ear necrosis, urinary infections (nephritis, urethritis, cystitis, etc - amoxycillin is particularly suitable for the treatment of these diseases because of its high concentrations in the urine after administration), respiratory diseases (pneumonia, bronchitis, etc), systemic treatment of infections caused by Gram-negative bacteria.

### DOSAGE

By intramuscular or subcutaneous injection:  
In general 1 ml per 10 kg b.w. may be repeated after 48 hours.  
Do not inject more than 20 ml at one site.

### WITHDRAWAL TIMES:

meat : 12 days. milk : 4 days.

A PHARMACEUTICAL PRODUCT.  
PRODUCED IN TURKEY.  
FOR VETERINARY USE ONLY.  
STORE IN A DRY & COOL PLACE.





# FLORFARM™

Net Contents **100 mL**  
INJECTABLE GROUP :  
PHI 18019

## LIVESTOCK INJECTABLE

Cattle, Sheep, Goat, Camel

### CONSTITUENT GROUP CLASS: AVERMECTIN

For treatment and control of internal and external parasites

### COMPOSITION

Each ml contains: Florfenicol 300 mg. - Excipients ad 1 ml.

### INDICATIONS

FLORFARM is indicated for preventive and therapeutic treatment of respiratory tract infections in cattle due to Mannheimia haemolytica, Pasteurella multocida and Histophilus somni. The presence of the disease in the herd should be established before preventive treatment. It is additionally indicated for treatment of acute outbreaks of respiratory disease in pigs caused by strains of Actinobacillus pleuropneumoniae and Pasteurella multocida susceptible to florfenicol.

### DOSAGE

Cattle: Treatment (IM): 1 ml per 15 kg body weight, twice at a 48-h interval.  
Treatment (SC): 2 ml per 15 kg body weight, administered once.

### WITHDRAWAL TIMES:

- For meat: Cattle: 30 days

A PHARMACEUTICAL PRODUCT.  
PRODUCED IN TURKEY.  
FOR VETERINARY USE ONLY.  
STORE IN A DRY & COOL PLACE.



# TILFARMA™

Net Contents **100 mL**

**INJECTABLE GROUP :**  
PHI 18020

## LIVESTOCK INJECTABLE

Cattle, Sheep, Goat, Camel

### CONSTITUENT GROUP CLASS: AVERMECTIN

For treatment and control of internal and external parasites

### COMPOSITION

**Each ml contains :** Tilmicosin base 300 mg.  
Excipients ad 1 ml.

### INDICATIONS

TILFARMA is indicated for the treatment of respiratory infections in cattle and sheep associated with *Mannheimia haemolytica*, *Pasteurella* spp. and other tilmicosin-susceptible micro-organisms, and for the treatment of ovine mastitis associated with *Staphylococcus aureus* and *Mycoplasma* spp. Additional indications include the treatment of interdigital necrobacillosis in cattle (bovine pododermatitis, foul in the foot) and ovine footrot.

### DOSAGE

Cattle : 1 ml per 30 kg body weight.  
Sheep : 1 ml per 30 kg body weight (.

### WITHDRAWAL TIMES:

- For meat: Cattle : 45 days. Sheep : 38 days.  
- For milk: Sheep : 15 days.

A PHARMACEUTICAL PRODUCT.  
PRODUCED IN TURKEY.  
FOR VETERINARY USE ONLY.  
STORE IN A DRY & COOL PLACE.



# TYLOGENT20™

Net Contents **100 mL**  
INJECTABLE GROUP :  
PHI 18021

## LIVESTOCK INJECTABLE

Cattle, Sheep, Goat, Camel

### CONSTITUENT GROUP CLASS: AVERMECTIN

For treatment and control of internal and external parasites

### COMPOSITION

**Each ml contains:** Tylosin tartrate 150 MG  
Gentamycin sulphate 50MG - Excipients qsp.

### INDICATIONS

Treatment of respiratory diseases: CRD, pneumonia, pleuropneumonia, pasteurellosis. Digestive diseases such as enteritis, gastritis, white-feces diarrhea, paratyphoid, genital disease, mastitis, and metritis.

### DOSAGE

Intramuscular injection: once a day.  
cows: 1 ml 25 kg of body weight.  
goats, sheep: 1 ml 20 kg of body weight.  
poultry: 1 ml kg of body weight.

### WITHDRAWAL TIMES:

- For meat: Cattle : 14 days. - Sheep : 10 days.  
- For milk: 5 days.

A PHARMACEUTICAL PRODUCT.  
PRODUCED IN TURKEY.  
FOR VETERINARY USE ONLY.  
STORE IN A DRY & COOL PLACE.



# ANTI-PAIN.™

Net Contents **100 mL**  
INJECTABLE GROUP :  
PHI 18022

## LIVESTOCK INJECTABLE

Cattle, Sheep, Goat, Camel

### CONSTITUENT GROUP CLASS: AVERMECTIN

For treatment and control of internal and external parasites

### COMPOSITION

**Each ml contains:** Analgin .....220 mg - Paracetamol. ....100mg  
Diclofenac.....50mg

### INDICATIONS

- Acute analgesic & inflammation: pain after surgery, trauma, pain caused by inflammation of respiratory.
- Reduce fever, pain in case of headache, musculoskeletal and nervous pain, etc.
- Treatment of arthritis in buffalo and cows.

### DOSAGE

- Deeply intra-muscular injection:  
+ Buffalo, cows, 1 ml/ 15 kg of body weight.  
+ Sheep, goats, calves: 1 ml/ 10 kg of body weight.  
3-5 days until recovering.

### WITHDRAWAL TIMES:

- For meat: Cattle : 5 days. - Sheep : 5 days.
- For milk: Sheep : 1 days

A PHARMACEUTICAL PRODUCT.  
PRODUCED IN TURKEY.  
FOR VETERINARY USE ONLY.  
STORE IN A DRY & COOL PLACE.



# STOP-FEVER™

Net Contents **100 mL**  
INJECTABLE GROUP :  
PHI 18023

## LIVESTOCK INJECTABLE

Cattle, Sheep, Goat, Camel

### CONSTITUENT GROUP CLASS: AVERMECTIN

For treatment and control of internal and external parasites

### COMPOSITION Each ml contains :

Paracetamol.....100mg Caffeine.....20mg VITAMIN C.....20 mg

### INDICATIONS

- Improve circulation of blood, enhance respiration. Treatment of serious infections causing inhibition in respiratory center and movement center of blood vessels.
- Support to overcome exhaustion for sick animals.
- Detoxication of anesthesia, hypnotic, giving first aid in case of sunstroke.
- Support blood circulation in case of suffocated newborn animals.

### DOSAGE

- Intra-muscular & subcutaneous injection:
- Cattle, horses: 20 ml/head. goats, sheep: 7 ml/head.
- Dogs, cats: 1 ml/head.

### WITHDRAWAL TIMES:

- For meat: Cattle: 5 days. Sheep : 5 days.
- For milk 2 days.

A PHARMACEUTICAL PRODUCT.  
PRODUCED IN TURKEY.  
FOR VETERINARY USE ONLY.  
STORE IN A DRY & COOL PLACE.











# PHARMACOX™

## 210

Anticoccidial Group | 25 kg  
PHAC: 18005

**Each 1Kg contains**  
**Clopidol :250 g**  
**Excipients :Up to 1000 g**

#### INDICATIONS

PHARMACOX-210 an aid in the prevention of coccidiosis in broiler chickens and chickens caused by *Eimeria tenella*, *E. acervulina*, *E. maxima*, *E. necatrix*, *E. brunetti*, *E. mitis* and *E. praecox*. As an aid in the prevention of leucocytozoonosis caused by *Leucocytozoon smithi* in turkeys.

#### TARGET SPECIES

Broiler chickens.  
Chickens reared for laying up to 16 weeks of age.  
Turkeys.

#### DOSAGE

For prevention of coccidiosis in broiler chickens and chickens reared for laying, 500 grams per ton of feed.

For treating of leucocytozoonosis in turkeys, the amount of Clopidol is 250 grams per ton of feed.

A PHARMACEUTICAL PRODUCT.  
PRODUCED IN TURKEY.  
FOR VETERINARY USE ONLY.  
STORE IN A DRY & COOL PLACE.



# PHARMACOX™

## 220

Anticoccidial Group | 25 kg  
PHAC: 18006

**Each 1Kg contains**

**a combination of monensin sodium 80 g  
and nicarbazin 80 g**

#### INDICATIONS

PHARMACOX210 is a coccidiostat containing the active ingredients monensin and nicarbazin. The combined strength of the ionophore monensin and the chemical nicarbazin leads to a unique new product in coccidiosis control. Monicox® is effective against coccidiosis caused by *Eimeria tenella*, *E. acervulina*, *E. brunetti*, *E. maxima*, *E. necatrix*, *E. mitis* and *E. praecox* affecting chickens for fattening and chickens reared for laying and against *Eimeria gallopavonis*, *E. meleagridis*, *E. dispersa*, *E. adenoeides* and *E. meleagrimitis* affecting turkeys.

#### TARGET SPECIES

Broiler chickens.  
Chickens reared for laying up to 16 weeks of age.  
Turkeys.

#### DOSAGE

For prevention of coccidiosis in broiler chickens and chickens reared for laying, 500 grams per ton of feed.

For treating of leucocytozoonosis in turkeys, the amount of Clopidol is 500 grams per ton of feed.

A PHARMACEUTICAL PRODUCT.  
PRODUCED IN TURKEY.  
FOR VETERINARY USE ONLY.  
STORE IN A DRY & COOL PLACE.



# PHARMACOX™

## 230

Anticoccidial Group | 25 kg  
PHAC: 18007

Each 1Kg contains

**Diclazuril : 2 gm**

**Excipients : Up to 1000 g**

#### INDICATIONS

PHARMACOX-230 is a feed additive for the prophylactic control of coccidiosis in broilers, turkeys, guinea fowl and rabbits. It is a potent synthetic coccidiostat which can be used strategically to clean-up high infection pressures at regular intervals. Wipes out ionophore resistant coccidia strains and helps to restore ionophore efficacy.

#### TARGET SPECIES

Broiler chickens.  
Chickens reared for laying up to 16 weeks of age.  
Turkeys.

#### DOSAGE

For prevention of coccidiosis in broiler chickens and chickens reared for laying, 500 grams per ton of feed.

For treating of leucocytozoonosis in turkeys, the amount of Clopidol is 500 grams per ton of feed.

A PHARMACEUTICAL PRODUCT.  
PRODUCED IN TURKEY.  
FOR VETERINARY USE ONLY.  
STORE IN A DRY & COOL PLACE.



# PHARMACOX™

## 240

Anticoccidial Group | 25 kg  
PHAC: 18008



**Each 1Kg contains**

**Salinomycin Sodium : 120gm**

**Excipients : Up to 1000 g**

#### INDICATIONS

PHARMACOX-240 is an anticoccidial feed additive for the prophylactic control of coccidiosis in chickens for fattening and chickens reared for laying.

#### TARGET SPECIES

Broiler chickens.  
Chickens reared for laying up to 16 weeks of age.  
Turkeys.

#### DOSAGE

For prevention of coccidiosis in broiler chickens and chickens reared for laying, 500 grams per ton of feed.  
For treating of leucocytozoonosis in turkeys, the amount of Clopidol is 500 grams per ton of feed.

A PHARMACEUTICAL PRODUCT.  
PRODUCED IN TURKEY.  
FOR VETERINARY USE ONLY.  
STORE IN A DRY & COOL PLACE.





# PHARMACOX-T

Anticoccidial Group | 1 L  
PHAC: 18001

 **DOSE FORM**  
Oral Solution

 **NET CONTENTS**  
1000 mL (1 Litre)

## COMPOSITION

Each ml contains :

Toltrazuril 25 mg,

Excipients ad 1 ml

## DESCRIPTION

PHARMACOX-T is an anticoccidial with activity against *Eimeria* spp. in poultry:

- *Eimeria* acervulina, brunetti, maxima, mitis, necatrix and tenella in chickens.
- *Eimeria* adenoides, gallopavonis and meleagridis in turkeys.

## INDICATIONS

Coccidiosis of all stages like schizogony and gametogony stages of *Eimeria* spp. in chickens and turkeys.

## DOSAGE

For oral administration:

- 500 ml per 500 litre of drinking water (25 ppm) for continuous medication over 48 hours, or
  - 1500 ml per 500 litre of drinking water (75 ppm) given for 8 hours per day, on 2 consecutive days
- This corresponds to a dose rate of 7 mg of toltrazuril per kg of body weight per day for 2 consecutive days.

## Withdrawal times

- Chickens : 14 days.
- Turkeys : 20 days.

MEDICINAL DRINKING WATER SHOULD BE REPLACED EVERY 24 HOURS.  
KEEP OUT OF THE REACH AND SIGHT OF CHILDREN. STRICTLY FOR VETERINARY USE ONLY. STORE THE PRODUCT IN THE CLOSED, ORIGINAL PACKAGING PROTECTED FROM DIRECT LIGHT, AND KEEP ITS LABEL FOR CORRECT IDENTIFICATION.

A PHARMACEUTICAL PRODUCT.  
PRODUCED IN TURKEY.  
FOR VETERINARY USE ONLY.  
STORE IN A DRY & COOL PLACE.



# PHARMACOX-D

Anticoccidial Group **1** L  
PHAC: 18002

 **DOSE FORM**  
Oral Solution

 **NET CONTENTS**  
1000 mL (1 Litre)

## COMPOSITION

Each ml contains :

Contains per ml:  
Diclazuril 25 mg

## DESCRIPTION

Diclazuril belongs to the group of benzeneacetonitriles and has anti-coccidial activity against Eimeria species. Depending on the coccidia species, diclazuril has an effect on either the sexual or the asexual stages of the development cycle of the parasite. Diclazuril is poorly absorbed from the intestinal canal, therefore it has mainly effect on coccidia present in the intestines.

## INDICATIONS

PHARMACOX-D is effective in the prevention and treatment of coccidial infections in poultry caused by Eimeria tenella, E. necatrix, E. acervulina, E. brunetti, E. mitis (mivati), and E. maxima. Because diclazuril is effective against E. maxima later in its life cycle, subclinical intestinal lesions may be present for a short time after infection

## DOSAGE

**For oral administration:**

Chicken: 500ML per 1000 liter Drinking water.

Sheep and goat: 5ml, each 30kg body weight;

Cattle 30ml each 100kg body weight.

MEDICINAL DRINKING WATER SHOULD BE REPLACED EVERY 24 HOURS.

KEEP OUT OF THE REACH AND SIGHT OF CHILDREN. STRICTLY FOR VETERINARY USE ONLY. STORE THE PRODUCT IN THE CLOSED, ORIGINAL PACKAGING PROTECTED FROM DIRECT LIGHT, AND KEEP ITS LABEL FOR CORRECT IDENTIFICATION.

A PHARMACEUTICAL PRODUCT.  
PRODUCED IN TURKEY.  
FOR VETERINARY USE ONLY.  
STORE IN A DRY & COOL PLACE.



# PHARMACOX-A

Anticoccidial Group | 1 L  
PHAC: 18003

 **DOSE FORM**  
Oral Solution

 **NET CONTENTS**  
1000 mL (1 Litre)

## COMPOSITION

Each ml contains :

Amprolium HCl 600 mg

## INDICATIONS

PHARMACOX-A is a concentrated liquid containing amprolium hydrochloride, to be used in drinking water of poultry, turkeys, pigs, calves, lambs and kids. It is used as a therapeutic agent against Eimeria infections in poultry, especially E. tenella, E. necatrix, E. acervulina and E. praecox. It is effective against other protozoal infections like Histomoniasis (Blackhead) in poultry and turkeys; against coccidiosis in calves, and lambs

## INCOMPATIBILITY WITH OTHER DRUGS

Do not combine with other medicines like antibiotics

## DOSAGE

For oral administration:

Poultry, turkeys :

500 ml per 1000 litres of drinking water during 5 days.

Calves, lambs : 2 ml per 30 kg bodyweight 5 – 7 days.

MEDICINAL DRINKING WATER SHOULD BE REPLACED EVERY 24 HOURS.

KEEP OUT OF THE REACH AND SIGHT OF CHILDREN. STRICTLY FOR VETERINARY USE ONLY. STORE THE PRODUCT IN THE CLOSED, ORIGINAL PACKAGING PROTECTED FROM DIRECT LIGHT, AND KEEP ITS LABEL FOR CORRECT IDENTIFICATION.

A PHARMACEUTICAL PRODUCT.  
PRODUCED IN TURKEY.  
FOR VETERINARY USE ONLY.  
STORE IN A DRY & COOL PLACE.



# PHARMACOX-AE

Anticoccidial Group **1** L  
PHAC: 18004

 **DOSE FORM**  
Oral Solution

 **NET CONTENTS**  
1000 mL (1 Litre)

## COMPOSITION

**Each ml contains :**

Each 1 ml contains:  
Amprolium HCl 300 mg.  
Ethopabate 20 mg.  
Vitamin K3.....10mg

## INDICATIONS

PHARMACOX-AE is an amprolium-ethopabate combination. This combination provides a maximal anticoccidial activity by preventing the parasite from utilizing thiamin and folic acid .  
PHARMACOX-AE controls different types of coccidia affecting poultry, turkeys, as *E.tenella*, *E.brunetti*, *E.acervulina* and *E.maxima*; especially when clinical signs are already evident. Also it controls other *Eimeria* species affecting calves and lambs .

## DOSAGE

**For oral administration:**

Chicken:500ML per 1000 liter Drinking water.  
Sheep and goat:3mL,each30kg body weight;  
Cattle 25 ml each 100kg body weight.

MEDICINAL DRINKING WATER SHOULD BE REPLACED EVERY 24 HOURS.  
KEEP OUT OF THE REACH AND SIGHT OF CHILDREN. STRICTLY FOR VETERINARY USE ONLY. STORE THE PRODUCT IN THE CLOSED, ORIGINAL PACKAGING PROTECTED FROM DIRECT LIGHT, AND KEEP ITS LABEL FOR CORRECT IDENTIFICATION.

A PHARMACEUTICAL PRODUCT.  
PRODUCED IN TURKEY.  
FOR VETERINARY USE ONLY.  
STORE IN A DRY & COOL PLACE.











ANIMAL  
HEALTH



**Pharmavet**

**Pharmavet İç ve Dış Tic. Ltd. Şti.**  
Zafer Sb Mahallesi Nilüfer Sokak  
No:10/105 İzmir, Turkey  
**info@pharmavet.com.tr**  
**www.pharmavet.com.tr**

